



2022 JATCO Environmental & Social Report

JATCO aims to realize a sustainable society through the development and production of automatic transmissions and electrified products for automobiles.

As a manufacturer specializing in automatic transmissions for automobiles, JATCO has been enhancing the environmental value of vehicles through its innovative step ATs, CVTs with seamless shifting and outstanding fuel efficiency, and transmissions for hybrid vehicles that achieve both driving performance and fuel efficiency. Even in the age of electrification, we will continue to provide new value that makes use of our core technologies and contributes to a sustainable future.

Jatco
The mission is passion.

CONTENTS

Mission	1
Contents	1
Message from the CEO	2
Corporate Philosophy	3
Social Responsibility	4
Part 1 Environmental Activities	
Environmental Activities	5
Message from the Environmental Management Representative	6
Environmental Results	7
Environmental Policy	8
Material Balance	9
Improvement Efforts	10
Environmental Management System	11
Carbon Neutrality Initiatives	13
Product Efforts	15
Logistics Efforts	17
Environmental Activities Efforts	18
Development Efforts	19
Product & Technology Efforts	20
3R Initiatives	22
Waste Reduction & Substance Management	25
Water Resource Management	26
Environmental Communication	28
Reducing Environmental Impact at Overseas Bases	30
Part 2 Social Activities	
Social Activities	31
Our Stakeholders	32
With Our Business Partners	33
For Our Customers	34
With Society	36
With Our Employees	38
SDGs Initiatives	41
Part 3 Corporate Governance	
Corporate Governance	42
Risk Management	44
Environmental Data For Each Production Base	47

Message from the CEO

JATCO aims to “drive the possibilities of mobility with technology and passion.” Based on this Purpose, we will take proactive steps to provide products and services that lead to realizing carbon neutrality and a sustainable society.

JATCO Ltd
President and CEO
Tomoyoshi Sato



The environment surrounding business has changed dramatically in recent years. The global outbreak of COVID-19, the shortage of semiconductors, and the rising cost of energy are calling into question even the sustainability of society itself.

Even in these uncertain times, it is possible to map out a direction for the future. In April 2022, we established our Corporate Purpose, “Driving the possibilities of mobility with technology and passion,” in order to provide direction for standing at the forefront of change and bringing about JATCO’s own transformation. This purpose was developed through more than a year of discussions among the corporate officers and a team of employees from around the world. The automotive industry is in the midst of a once-in-a-century transformation. Against this backdrop, we made clear our commitment to pioneering the future of mobility by leveraging our monozukuri strengths, which we have built up over more than five decades. The electrification business that we are promoting is one of the initiatives for realizing our Purpose. Since the 1970 founding of one of our predecessor companies, Japan Automatic Transmission Co., Ltd., we have continued to grow as a manufacturer specializing in automatic transmissions for automobiles. Meanwhile, we have accumulated know-how in preparation for the electrification age for more than a decade. In 2010, we developed the JR712E, the world’s first RWD transmission for hybrid vehicles with a one-motor two-clutch system. This year, we supplied gear components for the new Nissan Ariya that contribute to its quietness. We have also carried

out internal reorganization, establishing the e-Powertrain Promotion Department comprised of production technology personnel in April 2022. We will launch our e-Axle, which integrates gears, a motor, and an inverter, in the mid-2020s, and are making preparations to supply five million units for electrified vehicles annually by 2030. In the era of electrification, we will continue to provide competitive products that meet world trends and the needs of our customers.

We are also pursuing research and development of electric-assist bicycles, aiming to apply the technologies we have cultivated thus far to the field of mobility. In March 2022, JATCO and Fuji City, Shizuoka Prefecture, where our head office is located, signed the “agreement for community development and resolution of regional issues by utilizing bicycles.” We will work toward achievement of the SDGs and solutions that use bicycles for regional issues, such as promoting tourism, improving the health of citizens, alleviating traffic congestion, and reducing environmental impact.

Countries and companies across the globe have been setting CO₂ emission reduction targets for decarbonization. For our part, we aim to realize carbon neutrality throughout our value chain by 2050. By 2030, we will reduce CO₂ emissions by 46% from 2013 levels by advancing research and development of electrification products, as well as promoting energy conservation and decarbonization at our plants. The progress of our activities is regularly discussed at the Carbon Neutrality Steering Committee attended by the Chairman, President, and executives in charge of the initiatives.

These activities are driven by our diverse group of employees. We believe that an environment in which each employee can work with enthusiasm and grow globally leads to corporate revitalization. The results of our efforts have been recognized externally, and for four consecutive years since 2019, we have been named a “Certified Health & Productivity Management Organization” by a program sponsored by the Ministry of Economy, Trade and Industry. In order to earn the trust of society, it is essential for all employees to comply with laws and policies and to act fairly and honestly with a strong sense of ethics. We strive to ensure thorough compliance based on our Global Code of Conduct guidelines that are common to all Group companies across the world.

The key to solving the challenges facing the environment and society is not the activities of a single corporation, but communication with all stakeholders, including employees, customers, business partners, and local communities. In line with our new Purpose, JATCO will undertake proactive steps to realize a sustainable society together with all stakeholders.

Corporate Philosophy

Corporate Purpose

Driving the possibilities of mobility with technology and passion

Mobility enables the movement of people and goods.

Yet this movement is not just about moving.

By moving in a limitless space, new experiences arise, and new worlds unfold.

Hence, should the possibilities of mobility extend, allowing each and every person the movement they please, the hearts of all will be stirred, filling their interactions with energy and excitement. And thus, the world will become freer and more prosperous.

To realize such a world, JATCO drives the possibilities of mobility with technology and passion.

Mission

We, as a corporation trusted by society, will provide new value to a mobility by providing clean, safe, comfortable, yet exciting products and services.

Values : T-E-A-M

Team leadership by everybody

External mindset

Aspiration to win

Monozukuri excellence

We realize our Corporate Purpose through our Mission to accomplish, with all employees sharing common Values. That is the JATCO we strive for.

Technology

Technology is JATCO's most important asset and source of value. We recognize the value of the technology we have cultivated, further deepen it, and open up our future.

Passion

JATCO explores new possibilities with a passion for manufacturing, innovation, and our customers. Passion is the driving force behind our challenge mindset.

Mobility

Mobility is all about movement and the means of movement in social activities. The scope of mobility is expanding, beyond the surface of the Earth where cars drive, to the sea, the sky, and outer space. JATCO's area of activities is also expanding steadily.

Social Responsibility



Contributing to the achievement of the SDGs

The 2030 Agenda for Sustainable Development was adopted at the UN Sustainable Development Summit in September 2015. This agenda outlines 17 Sustainable Development Goals (SDGs) and their associated 169 targets, which are international goals aiming for a better, sustainable world by 2030. JATCO supports these shared global goals and is contributing to their achievement. To show how each of our initiatives is connected to the SDGs, pages describing related initiatives have the corresponding SDG icons on display.

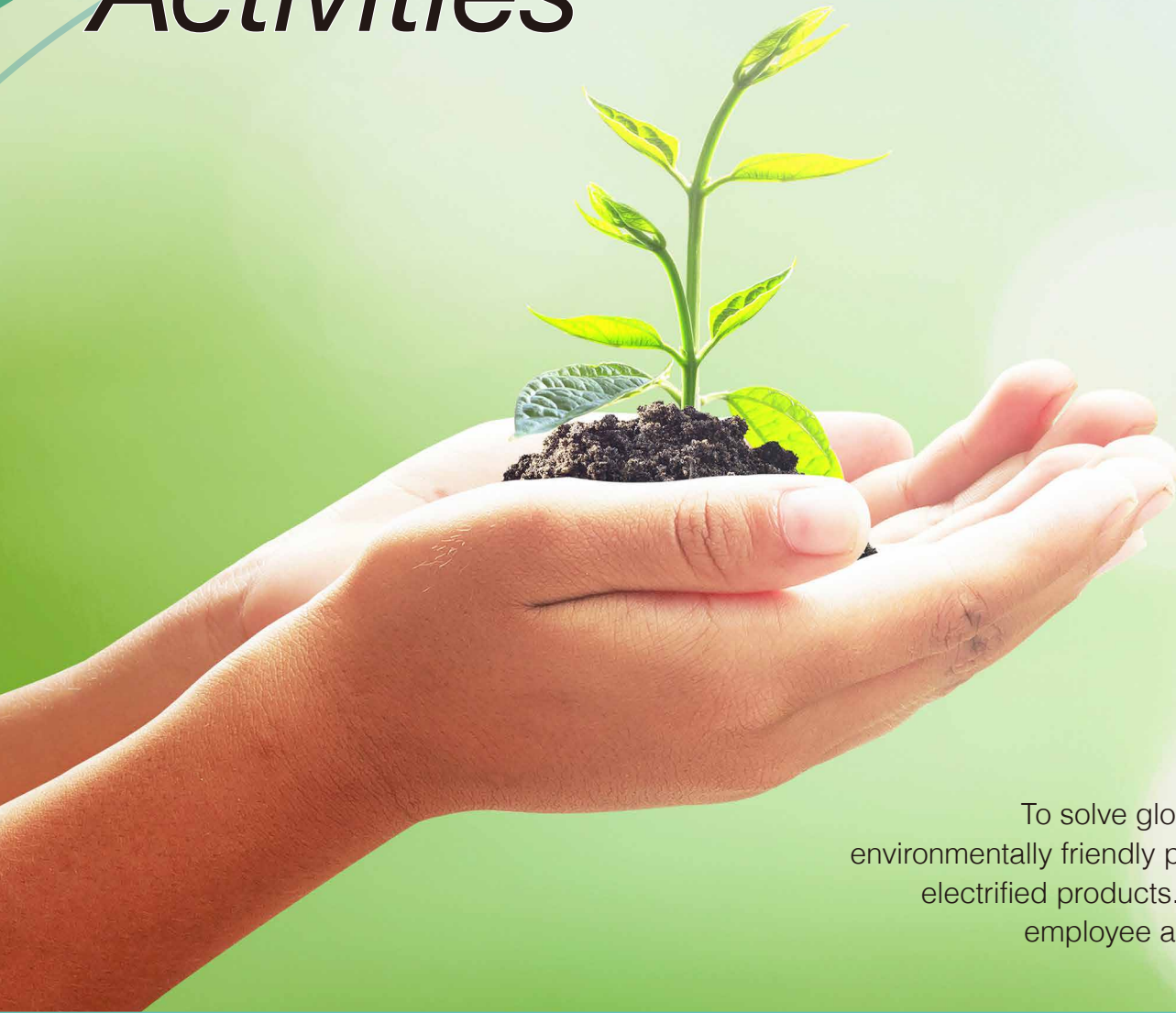


Aiming to realize a sustainable society by providing uniquely JATCO value

Needless to say, we at JATCO abide by the law, respect human rights, and consistently act with fairness. We are fulfilling our societal responsibilities by providing new value to society through our business pursuits and the development and provision of our products. With "good corporate citizenship" as our mantra, we promote social contribution activities centered on the three topics of environment, education, and welfare, and engage in voluntary initiatives to help resolve societal problems as we aim to be a company that is well loved by society.

Part 1

Environmental Activities



To solve global environmental issues, JATCO is working on the building of environmentally friendly production and logistics processes and on the development of electrified products. We will raise the environmental awareness of each and every employee and aim for a sustainable future together with our stakeholders.

Message from the Environmental Management Representative

JATCO makes active efforts to build production and logistics processes that have low environmental impact, alongside providing products and services with excellent environmental performance, such as electrification operations. All of our employees and corporate officers take united, proactive actions with an environmental perspective to contribute to a sustainable global environment.

JATCO Ltd
Senior Vice President
Takafumi Arai



In recent years, natural disasters such as large-scale droughts and floods caused by global warming have become increasingly familiar occurrences, and urgent efforts are needed to address global environmental issues. JATCO develops an Environmental Management Program for each fiscal year that lists initiatives for reducing environmental impact, and strives to realize the environmental targets. Through forums such as the Environmental Committee, which is led by the ISO14001 Secretariat, we review the results of efforts made each fiscal year and set targets for the following fiscal year and onwards to continuously improve our environmental performance.

JATCO has been focusing on the development of environmentally friendly products, such as high-gear transmissions and hybrid transmissions. The Jatco CVT-X launched in June 2021 uses twin oil-pumps to achieve the highest level of fuel efficiency, surpassing the 90% transmission efficiency barrier that had been considered difficult to overcome. In the coming era of electrification, JATCO will continue to utilize its strengths in vehicle optimization experience, gear design and processing technology, and high-quality mass production technology to perform research and development on products to bring new value to electric vehicles, including our e-Axle.

We aim to realize “factories that never stop” by making the state of equipment in the production process visible at all times. After purchasing raw materials, JATCO carries out production in an integrated manner from raw material

processes, machining, assembly, inspection, to shipping. Therefore, if production stops due to an error midway through, subsequent processes will be affected. If we can detect an equipment’s operational status at an early stage, the problem and the origin and type of loss will become clear. In turn, the energy consumed to manufacture a single unit can be minimized, contributing to improved overall equipment effectiveness (OEE).

Furthermore, to minimize energy use at our plants, we are conserving energy by introducing pulse blowers to the air blowing process, adding inverter control to pumps and fans, using LED lighting for panel and production lighting, and optimizing air conditioning. In addition, we will promote energy conversion by procuring clean energy, such as alternative and renewable energy, to decarbonize our energy use. Many steel materials are utilized in transmissions. For example, differential gears are made from cast iron and shafts from forgings. To address this challenge, we will work together with our partners to achieve technological breakthroughs.

The shift to automobile electrification is expected to continue in order to protect the global environment. To push forward environmental considerations for our electrification products as well, we will review the design, production, and quality of electrification products, utilizing existing assets and resources to the fullest. This effort will be led by the newly established e-Powertrain Promotion Department, comprised of production technology staff and others.

Green logistics is another important challenge for reducing environmental impact. In order to reduce CO₂ emissions during parts transportation, we promote modal shifts from truck to rail and ferry transportation, and improve loading efficiency by consolidating cargo.

Furthermore, we aim to realize a recycling society by incorporating the 3R (reduce, reuse, recycle) approach from the product design stage. In addition, to counter global water depletion, we monitor the amount of water used during production and are taking measures to reduce water use by 2% every year.

JATCO operates production bases globally. Our approach to promoting environmental sustainability is no different even at our overseas production bases, including JATCO MEXICO S.A. DE C.V., JATCO (Guangzhou) Automatic Transmission Ltd. and JATCO (Suzhou) Automatic Transmission Ltd. in China, and JATCO (Thailand) Co., Ltd.

Protecting the global environment means preserving the foundation of human life. The evolution of mobility rests on this foundation. As the environmental management representative, I will continue to strengthen our efforts to preserve Earth’s environment.

Environmental Results

Total waste generated

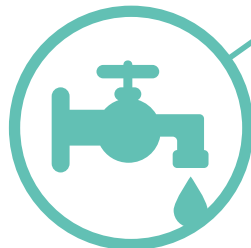
62.8% reduction

(Compared to FY2006)



Recycling rate

100%



Emissions of three major hazardous air pollutants

None



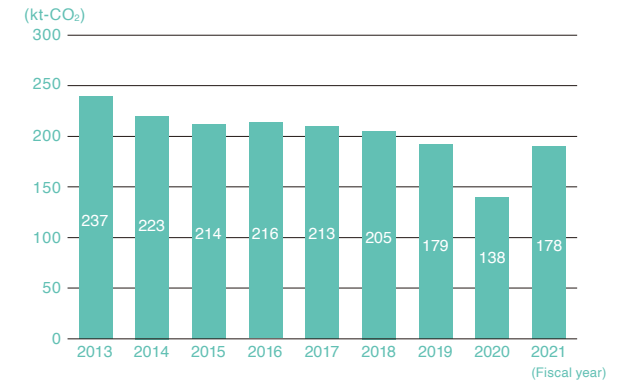
CO₂ emissions generated by our operations in Japan **34.77% reduction** (Compared to FY2013)

177,681 t-CO₂

JATCO's operations in Japan in FY2021 generated 177,681 t-CO₂. Unit CO₂* was 0.0645t-CO₂/unit, which was due to reduced production caused by the impacts of COVID-19, semiconductor supplies, and increased fuel consumption for heating due to the severe winter.

*To understand the proportional ratio of production fluctuations, JATCO monitors unit CO₂ (CO₂ produced per unit)

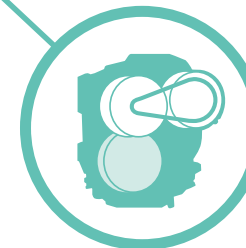
■ Changes in CO₂ emissions



Jatco
2021



JATCO's achievements in FY2021



VOC* emissions

99% reduction

(Compared to FY2000)

*VOC: Volatile Organic Compound, which is an organic compound that enters a gaseous state when exposed to the atmosphere.

Environmental Policy

We aim “for the realization of a society where the environment and cars can coexist” through our environmentally-friendly products and facilities.

For the realization of a society where the environment and cars can coexist

Technology: Development of transmissions with efficient energy transfer

Prevention of pollution: Prevention of environmental problems and legal compliance

Effective utilization of resources: Minimization of the use of resources and energy

Continuous improvements: Enhancing the effectiveness of the environmental management system

What JATCO can do for the future of the environment and automobiles

When customers choose a car, fuel economy and the environment are becoming increasingly important factors in their decision-making processes. As a manufacturer specializing in transmissions, JATCO pursues both driving and environmental performance. Our technologies and experience provide that value through products such as our Jatco CVT-X, Jatco CVT-S, Jatco CVT7, Jatco CVT8, Jatco CVT8 HYBRID, and JR913E. Going forward, we will continue to develop innovative technologies such as transmissions and e-Axes for electric vehicles (EVs) and fuel cell vehicles (FCVs) and contribute to the future of automotive society. Even in the future, we will never lose steam in tackling our monozukuri challenges “for the realization of a society where the environment and cars can coexist.”

Accounting for the environment in our global business activities

JATCO is operating production bases globally in order to ensure a stable supply of products to automobile manufacturers around the world. To minimize the impact on the environment imposed by our production bases, we apply the same environmental protection measures used in our production bases in Japan to all our bases around the world, and we are proactive in trying out unique ideas at each base. Furthermore, all of our bases have earned the new ISO14001:2015 environmental management system certification (steps to acquire the certification at JATCO Suzhou, established in November 2019, are in progress). Going forward, with the aim of producing transmissions with outstanding fuel efficiency while also caring for the environment during the production process itself, we will continue engaging in production practices that minimize environmental impact across our bases all over the world.



JATCO (Guangzhou) Automatic Transmission Ltd. acquired ISO 14001:2015 certification in 2017.

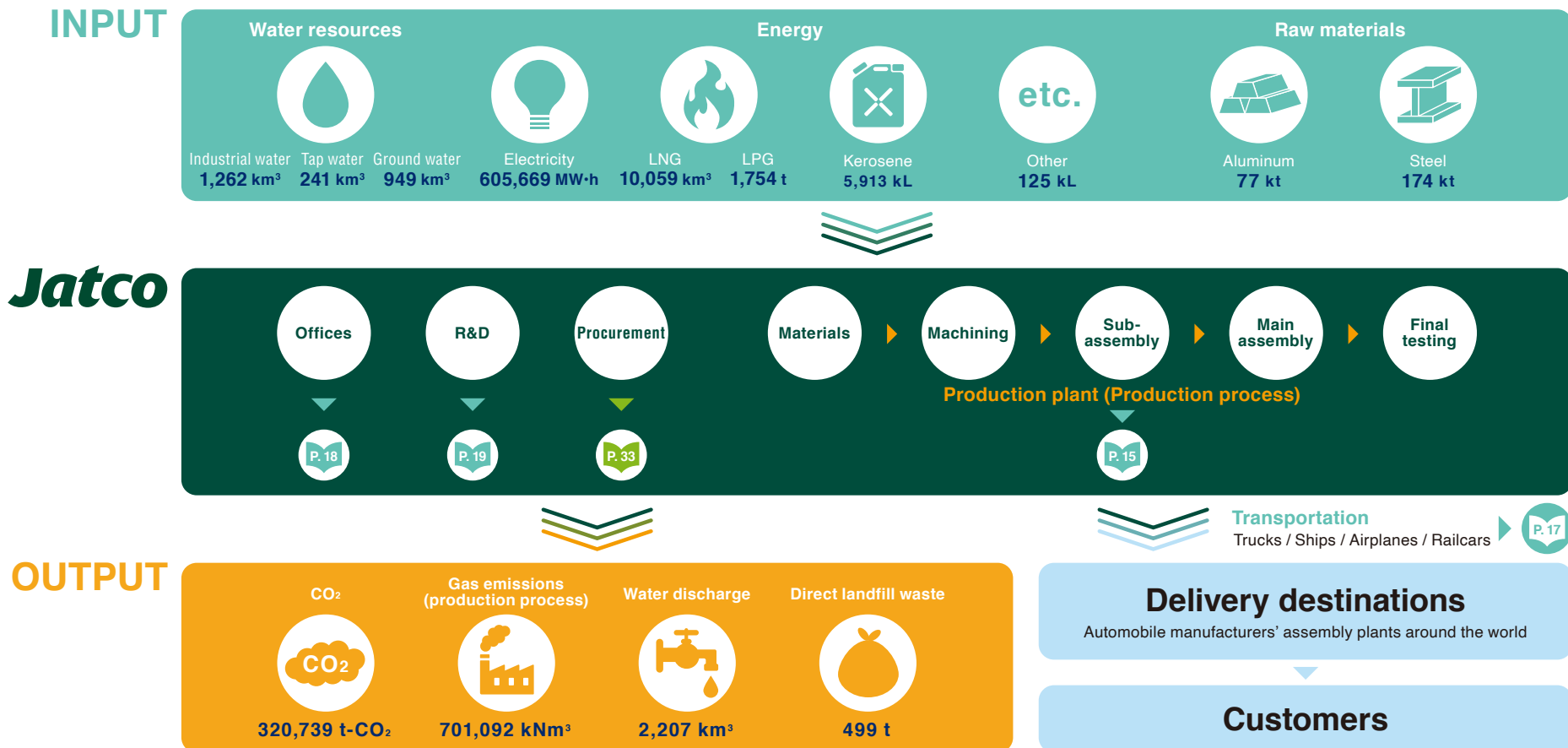


In addition to its main CVT and AT products, JATCO is conducting research and development on e-Axes for electric vehicles.

Material Balance

Understanding the emissions generated as a result of our business operations

JATCO aims to create a recycling-oriented society and is working to reduce the amount of industrial waste generated from business activities by properly using resources and reducing emissions.



Note: The numbers shown are extracted from global data for FY2021

Improvement Efforts

Continuous efforts to reduce environmental impact, based on the PDCA (Plan-Do-Check-Act) cycle

JATCO sets forth initiatives every year aimed at reducing environmental burden as our environmental targets, and aims to achieve these targets.

Based on the results of these initiatives every fiscal year, we establish our targets for the following fiscal years, thereby continuously improving our environmental performance.

■ Targets and results for FY2021

Environmental objectives	Items	FY2021 targets	FY2021 results	Achieved	FY2022 targets
Continuous improvement of our environmental management system	Routine reviews	<ul style="list-style-type: none"> Receive regular audits: maintain certification Internal environmental audit: 1 time Environmental Committee meeting: 2 times 	<ul style="list-style-type: none"> Received regular audits: maintained certification Internal environmental audit: 1 time Environmental Committee meeting: 2 times 	✓	<ul style="list-style-type: none"> Receive regular audits: maintain certification Internal environmental audit: 1 time Environmental Committee meeting: 2 times
	Internal environmental auditor training	<ul style="list-style-type: none"> Train people as needed 	<ul style="list-style-type: none"> 7 people trained 	✓	<ul style="list-style-type: none"> Train people as needed
Compliance with laws and preventive measures for environmental issues	Findings highlighted by administrative and government agencies	<ul style="list-style-type: none"> Number of findings: 0 	<ul style="list-style-type: none"> Number of findings: 0 	✓	<ul style="list-style-type: none"> Number of findings: 0
	Maintenance of significant environmental characteristics	<ul style="list-style-type: none"> Accomplish 100% of regular reviews 	<ul style="list-style-type: none"> Accomplished 100% of regular reviews 	✓	<ul style="list-style-type: none"> Accomplish 100% of regular reviews
	Education relating to environmental laws	<ul style="list-style-type: none"> Perform environmental training: 2 times 	<ul style="list-style-type: none"> Perform environmental training: 2 times 	✓	<ul style="list-style-type: none"> Perform environmental training: 2 times
	Prevention of environmental accidents	<ul style="list-style-type: none"> Number of B rank accidents: 0 Number of C rank accidents: 2 	<ul style="list-style-type: none"> Number of B rank accidents: 1 Number of C rank accidents: 0 	✓ -	<ul style="list-style-type: none"> Number of B rank accidents: 0 Number of C rank accidents: 2
Promotion of resource conservation	Promotion of energy conservation <ul style="list-style-type: none"> Energy per unit sales (CO₂) 	<ul style="list-style-type: none"> 0.4803 t-CO₂/unit 	<ul style="list-style-type: none"> 0.0523 t-CO₂/unit 	✓ -	<ul style="list-style-type: none"> 0.0555 t-CO₂/unit
	Promotion of waste reduction <ul style="list-style-type: none"> Reduction in total waste generated 	<ul style="list-style-type: none"> 1.8850 kg/unit 	<ul style="list-style-type: none"> 1.7810 kg/unit 	✓	<ul style="list-style-type: none"> 1.766 kg/unit
	<ul style="list-style-type: none"> Reduce water consumption 	<ul style="list-style-type: none"> 0.619m³/unit 	<ul style="list-style-type: none"> 0.590m³/unit 	✓	<ul style="list-style-type: none"> 0.628m³/unit
Technological development aimed at reducing environmental impact	Environmentally-friendly design [Contribution to environmental conservation and fuel-economy improvements]	<ul style="list-style-type: none"> Achieve 100% of goals for individual (product) issues 	<ul style="list-style-type: none"> Achieved 100% of goals for individual (product) issues 	✓	<ul style="list-style-type: none"> Achieve 100% of goals for individual (product) issues
	Management and reduction of environmentally hazardous substances in products	<ul style="list-style-type: none"> Maintain product compliance with environmental laws and regulations at 100% 	<ul style="list-style-type: none"> Maintained product compliance with environmental laws and regulations at 100% 	✓	<ul style="list-style-type: none"> Maintain product compliance with environmental laws and regulations at 100%
Harmonious existence with the local community, society, and nature	Disclosure of information to external parties	<ul style="list-style-type: none"> Publish our Environmental & Social Report 	<ul style="list-style-type: none"> Publish our Environmental & Social Report 	✓	<ul style="list-style-type: none"> Publish our Environmental & Social Report
	Communication with local communities	<ul style="list-style-type: none"> Participate in local community contribution activities: 50 events 	<ul style="list-style-type: none"> Participate in local community contribution activities: 99 events 	✓	<ul style="list-style-type: none"> Participate in local community contribution activities: 50 events

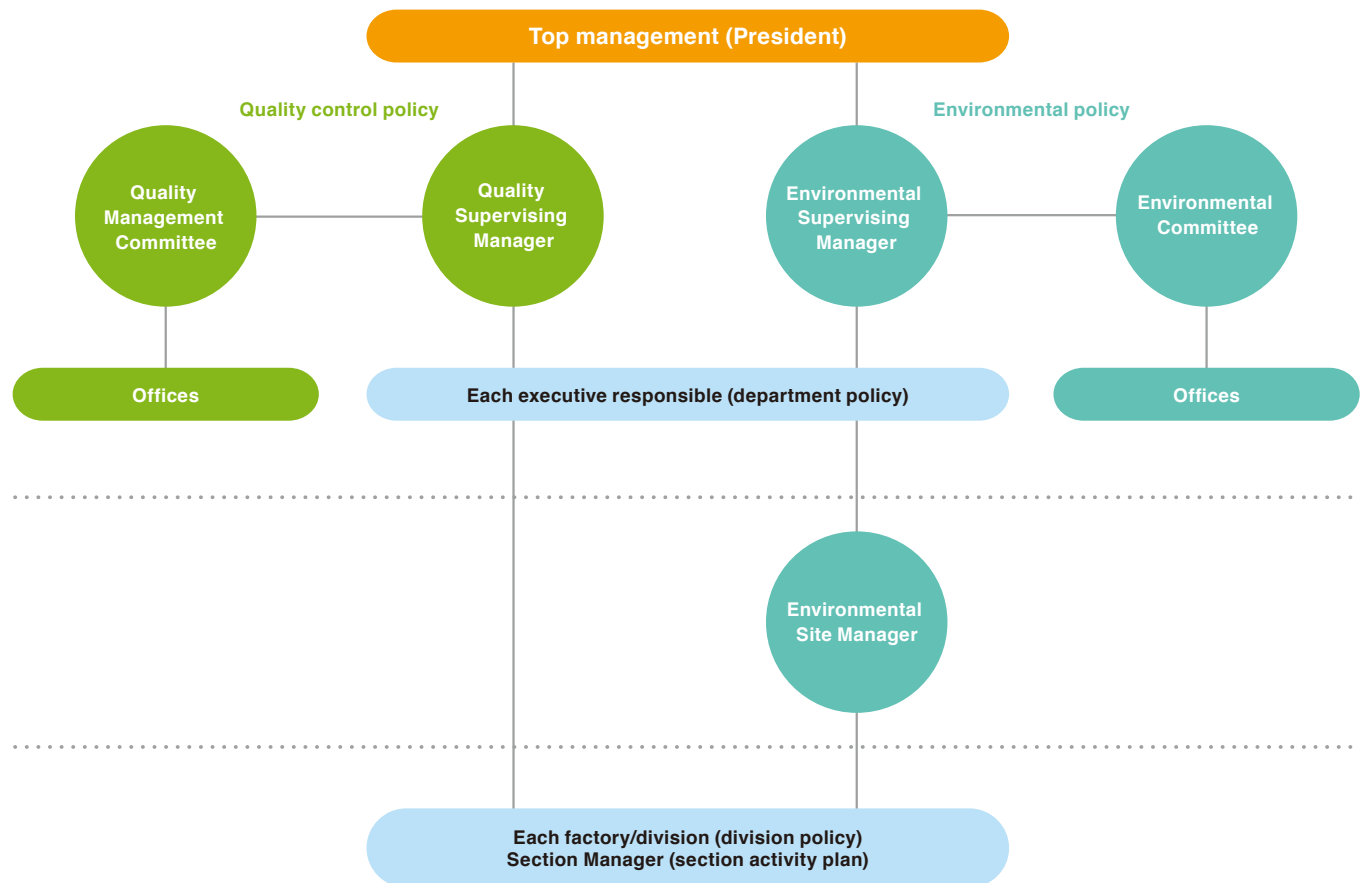
✓: 100% achieved ✓ -: 80% or more achieved

Environmental Management System

Promotion system for environmental management

JATCO has earned ISO14001 certification for its head office in Fuji City, Shizuoka Prefecture, and for its production bases in Japan. As part of our framework to promote our environmental management system (EMS), we appointed one environmental supervising manager, 9 site managers, and 3 deputy site managers. Under the management and authority of the environmental supervising manager, they promote our EMS at each production base and division. Furthermore, in 2011, we integrated our quality management system and our environmental management system. With regard to EMS promotion across the entirety of JATCO, comprehensive deliberation and assessment is carried out by a company-wide environmental committee comprised of the environmental supervising manager and environmental site managers, and a follow-up system is put in place. By applying the company-wide EMS to all divisions and production bases, we are able to align our efforts as a company, and strongly promote environmental management. This is a major characteristic of JATCO's EMS. In terms of domestic JATCO group companies, JATCO Engineering Ltd independently earned its ISO14001 certification. As for our overseas bases, JATCO MEXICO S.A. DE C.V., JATCO (Guangzhou) Automatic Transmission Ltd., and JATCO (Thailand) Co., Ltd., earned their ISO14001 certifications in 2011, 2013, and FY2015 respectively. JATCO (Suzhou) Automatic Transmission Ltd., which began operations in 2019, is currently making progress on establishing an environmental management system to acquire the certification.

■ JATCO's systems promoting quality and environmental management



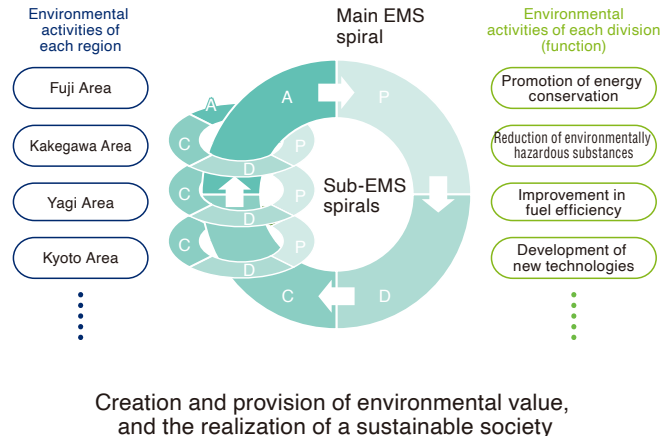
Environmental Management System

Promotion system for environmental activities

Promotion of activities that meet the needs of the local community by the Environmental Committees of each region

JATCO has established Environmental Committees in each region, and the Committees carry out environmental activities that meet the needs of the local community. By mutually interlinking and operating two types of PDCA cycles—the PDCA cycle for the whole of JATCO (main EMS spiral) and the PDCA cycles for the regions and divisions (sub EMS spirals)—we strive to unite the direction of all the initiatives that are implemented. The aim is to create and provide environmental value to our stakeholders through continuous improvements, in order to improve the effectiveness of our activities.

■ Conceptual diagram of JATCO's environmental activities



Stakeholders Customers, employees, business partners, local communities, etc.

Exploring medium- to long-term strategies through an environmental planning subcommittee

As an organization that explores medium- to long-term strategies for its environmental plan, JATCO established an environmental planning subcommittee in 2008. In contrast to the EMS promotion system that carries out environmental management by sector, the committee was formed to examine and promote medium- to long-term strategies related to the environment that JATCO should implement in response to social conditions and top-level policy. While examining JATCO as a whole, the committee performs management and planning across the company. They implement this strategy while coordinating the environmental activity planning and management of our overseas bases. The subcommittee is further broken

■ Conceptual diagram of JATCO's Environmental Planning Subcommittee



Medium- to long-term environmental strategy

up into eight working groups that deal with product development, production, and delivery amongst other business activities, creating environmental management that revolves around function as its axis. Within this, the environmental committee is strengthening its initiatives in three of the most important environmental fields to JATCO—stopping global warming, preserving the environment, and effective utilization of resources.

*1 For details related to corporate responsibility, see page 3

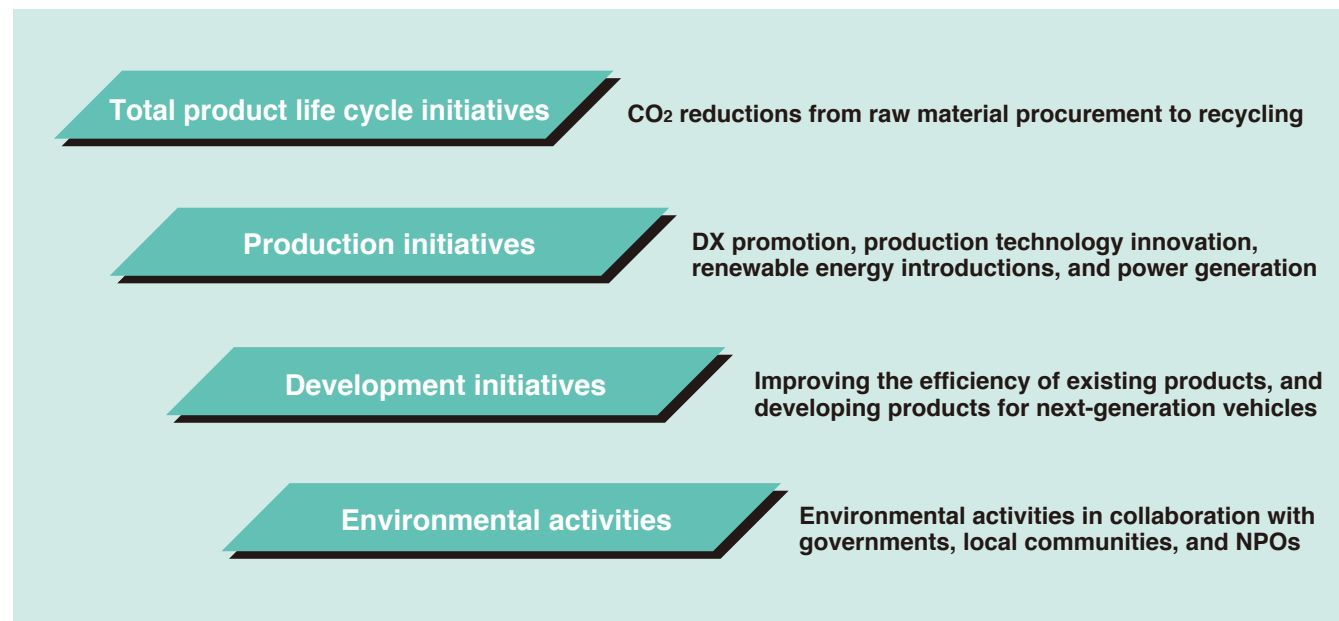
*2 For details related to quality control policy, see page 34

*3 For details related to environmental policy, see page 6

Carbon Neutrality Initiatives

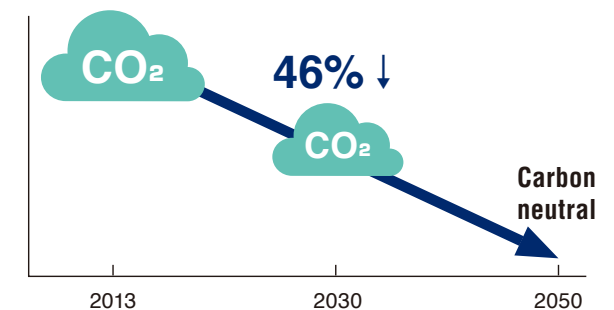


JATCO aims to achieve carbon neutrality in its entire value chain by 2050



JATCO aims to achieve carbon neutrality throughout its entire value chain by 2050, focusing on efforts in the four areas of total product life cycle, production, development, and environmental activities. As a mid-term target, by 2030 JATCO aims to reduce CO₂ emissions by 46% compared to 2013 levels by promoting changes such as switching to electrified forklifts, making effective use of heat treatment capacity, and converting fuel for

melting furnaces and aluminum heat treatment furnaces in factories. From 2030 to 2050, JATCO will achieve carbon neutrality by utilizing technologies that directly capture CO₂ from the air and by generating its own energy.



Aiming to reduce CO₂ emissions
by 46% by 2030
(compared to 2013)

Discussions at the Carbon Neutral Steering Committee

Once a month, the Carbon Neutral Steering Committee discusses strategy formulation for and confirms progress towards realizing carbon neutrality. The Committee has the participation of the individuals responsible for total product life cycle, production, products, and environment, and aims to quickly solve problems and invigorate company-wide activities through support and decision-making by reviewers such as our President.

Carbon Neutrality Initiatives



JATCO's overall life-cycle efforts



CARBON NEUTRALITY INITIATIVES

Production Efforts

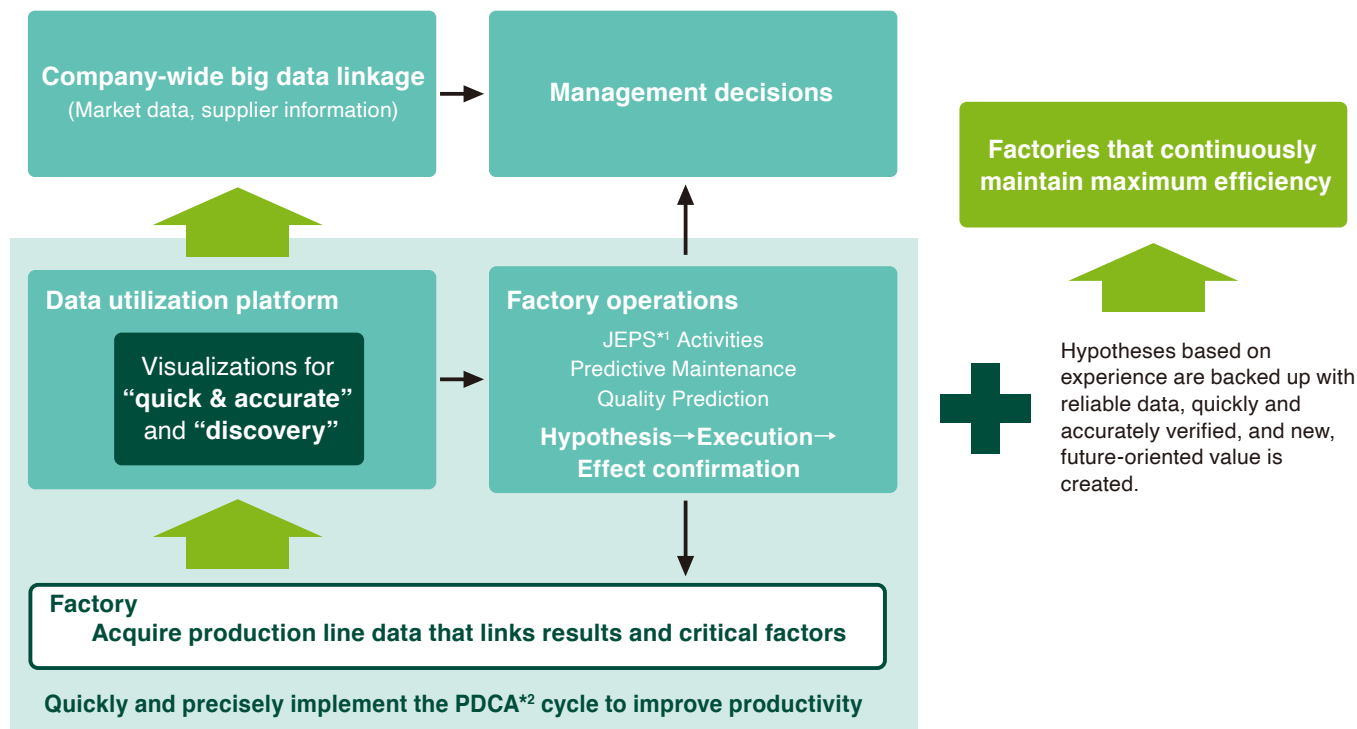


Working towards a smart factory

JATCO aims to turn its factories into smart factories. Led by our Digital Innovation Promotion Office established on April 1, 2020, we are advancing

DX (digital transformation) in manufacturing and promoting productivity improvements and energy conservation.

JATCO Smart Factory Concept



*1 JATCO Excellent Production System

*2 Plan-Do-Check-Act

Visualizing equipment operational status

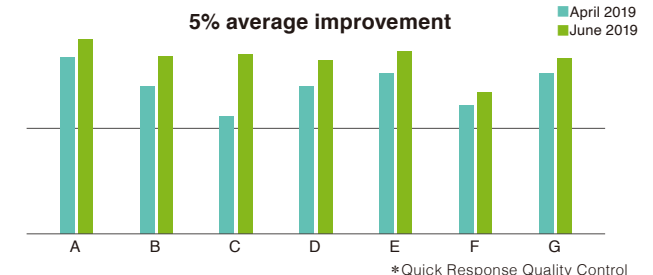
JATCO's plants have a system that eliminates any waste by synchronizing the series of processes from material procurement, processing, assembly, inspection, and shipping as if they were a single line. If production stops due to an error, it will affect the next process and then the one after that. In order to eliminate these effects, we aim to create "factories that never stop" by making the state of equipment in the production process visible at all times. Based on QRQC*, which quickly solves quality problems that occur in the workplace, we have created an in-house operation management software that allows us to see our operational status at a glance. This has made it possible to reduce production losses by quickly identifying phenomena such as short stoppages and breakdowns and implementing countermeasures. The introduction of the operational status monitor has improved the



QRQC using our operation management software

efficiency of our production lines by 5%. JATCO is aiming for the ultimate in efficiency and quality, and by expanding the scope of its digital technology to create a smart factory, we will also contribute to the realization of carbon neutrality by minimizing the energy per unit used to manufacture our products.

Example improvements in line efficiency due to use of the status monitor



Production Efforts



Promoting energy and resource conservation in pursuit of greater efficiency in the production process

After purchasing the raw materials, JATCO carries out production in an integrated manner, from the rough material, the machining, and the assembly, to the completion of the unit, and, when planning for a new product or developing a new technology, we are mindful of Earth's resources. In particular, with the aim of tackling priority issues—such as CO₂ emissions reduction and hazardous substance management—through the active adoption of new technology and the recycling of goods by using idle facilities, we are putting effort into developing innovative technologies to shorten work processes and develop highly-efficient processes with low environmental impact, as well as making the shift toward low-energy and low-resource facilities.

Adoption of production design into the machining and heat treatment lines

For the JATCO CVT7, production design was promoted by involving the production technology division in the product design process from the development phase. By minimizing the number of processing stations on the pulley machining line, we significantly reduced the number of production machines and cycle time. By incorporating the requisite specifications in the heat treatment line, we also significantly cut cycle time on that line. These measures have dramatically increased our current production efficiency.

Machining line			
	Line for previous units	Line for new units	
Equipment numbers	49 machines x 3.5 modules	27 machines x 3.5 modules	-43%
Heat treatment line			
	Line for previous units	Line for new units	
Cycle time	100%	66.6%	-33%

Switch from hydraulic press fitting to servo (electric) press fitting

In conventional hydraulic press fitting, which is a part of the assembly process, a large amount of electricity is consumed at the pump because the hydraulic generator is constantly running. In addition, a lot of noise and heat is generated. Hence, JATCO is switching to the use of electric press fitting using servos. As a servo does not require a pump to constantly be in operation like for a hydraulic press fitting, it successfully minimizes the electricity consumed, as well as the noise and heat generated.

Enhancing production and engineering process innovation and inventive technology development

In our development of next-generation technologies, we established the elimination of CO₂ emissions as one of JATCO's principal goals, and have been putting in place initiatives to achieve our goal of zero greenhouse gas emissions by 2050, for both our production and development processes. One of these processes is the one for our latest CVT and vehicle electrification unit. We further reviewed the processes used to date, and succeeded in reducing production lead-time significantly. With regard to our other parts, the development and production divisions are working together to minimize CO₂ emissions. Furthermore, we are working towards balancing product performance and improving productivity by promoting "production design," which gets the production technology division involved in the design of the product from the development phase. We challenge ourselves to achieve ever greater technological breakthroughs, such as the enabling of lower energy use for the production of our products through the purchase of molten metal at the die-casting stage, the abolishment of the shaving process for gear parts, the development of a next-generation vacuum carburizing furnace, the reduction of the weight of units through the use of alternative materials and thin-walled die-casting, and the downsizing of casting machines.



Vacuum carburizing furnace

Preserving Earth's environment through cross-industry collaboration

JATCO is actively pushing its collaborations with companies from different industries as part of a new initiative for preserving the Earth's environment. Since FY2005, we have worked jointly with TEPCO Energy Partner, Incorporated, to introduce NaS battery* facilities. The NaS batteries charge at night when power consumption is low, and this electric power is utilized during the day when load is high. This helps to reduce excess operation of power plants and brings about efficient power consumption. In FY2020, we upgraded our equipment, and when the power companies are short on power, we release stored power, contributing to the stability of power supply and demand.



NaS battery facility

*NaS battery: A storage battery composed of liquid sodium (Na), liquid sulfur (S), and special ceramics

Logistics Efforts



FY2021 CO₂ emissions due to transport activities

13% reduction

(Compared to FY2016)



Implementation of a modal shift

JATCO utilizes green logistics with the aim of reducing our CO₂ emissions and has achieved an average reduction of 13% per year in the five years since 2016. In order to reduce the CO₂ emissions due to the transportation of our parts, we have been implementing a modal shift in our logistics, while gaining the acceptance of our customers in Japan. Specifically, we switched from using trucks to using railcars for the transportation of procured parts to JATCO's production bases in Shizuoka, starting from FY2005 for the route from Hiroshima (approximately 780 km away). As a result, we were able to reduce our CO₂ emissions by 83.3%.

Additionally, since September 2019 we have introduced double trailer trucks to transport JATCO production parts from the JATCO Fuji area to the Kyoto Yagi plant. Transporting at a high load factor led to a reduction in CO₂ emissions.

We will continue to pursue this modal shift and work to improve load efficiency to reduce the number of trucks and other vehicles used for shipping.

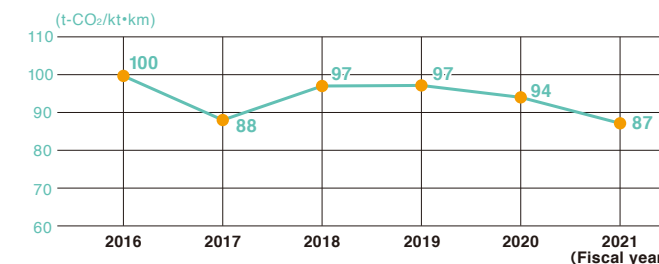


Land transportation by railway



Double trailer truck

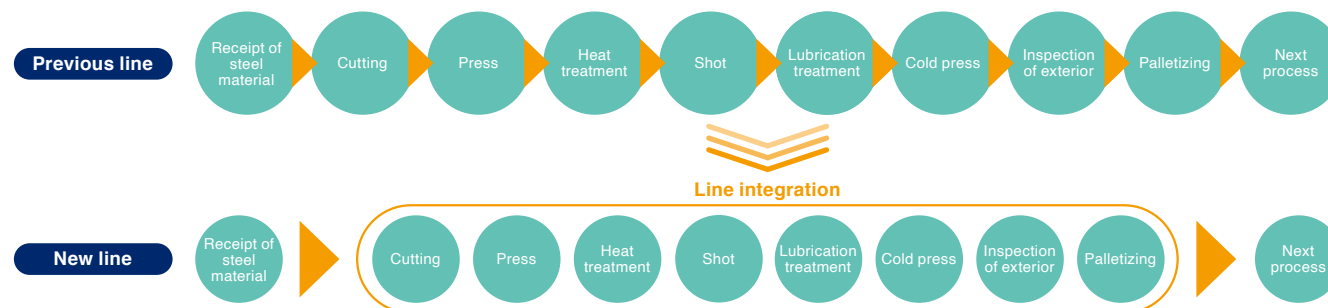
■ Trend in unit CO₂ emissions generated (Index)



*Unit CO₂ emissions generated: CO₂ emissions (t-CO₂) ÷ Transportation load (kt·km)

Use of residual heat in the forging process

At JATCO, we previously used a process that cooled the parts once after hot forging, heated the parts once again, and then carried out heat treatment for rough materials. Currently, we are pushing the transition to a heat treatment format that uses residual heat after hot forging (auto-thermal annealing). This has allowed us to integrate the heat treatment processes that had been carried out on separate lines into one line, thereby omitting the need for logistics between the lines.



Environmental Activities Efforts



Office Efforts

Educating employees through the use of environmental content

With the aim of raising environmental awareness among employees, we set up a dedicated environmental topics webpage on our employee portal site. In addition to encouraging employees to participate in conservation events both within and without the company, we post content, such as JATCO's unique eco certification and eco-drive certification, to help employees learn about environmental issues in a fun and enjoyable manner. There is also a

section with visualizations of our power consumption, which sheds light on our actual power consumption, and a section on electrical cost reduction, which provides information about energy conservation. All of our employees can easily check the amount of electricity used in each area, thereby leading to spontaneous energy saving.

Adoption of solar power systems and roof greening initiatives

JATCO has installed a solar power system (10 kW), on the rooftop of our head office in Fuji City. The power it generates is used to drive the air-conditioning equipment. We have also carried out roof greening initiatives that make use of the reduction of building temperature brought about by plants to reduce the amount of power consumed by air-conditioning facilities during summer. In FY2020 we reduced CO₂ emissions by approximately 5 metric tons.

正解だと思われるほうにチェックして下さい。問題は全部で50問(2点/問)、70点以上で合格です。
※ JATCO eco検定は、東京商工会議所が行っている「環境社会検定(eeco検定)」を元に作成しています。
実際の試験は選択形式ですが、ここでは○×形式にしています。

◎ 環境問題について
① 持続可能な社会に向けて

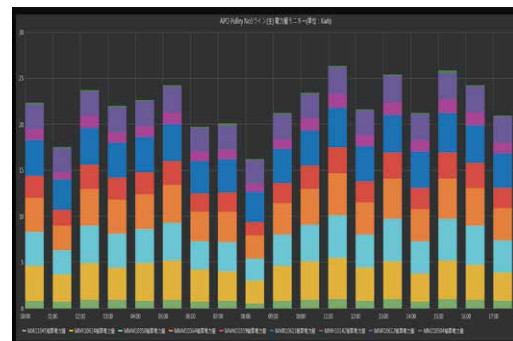
問1
「Think Globally, Act locally」という標語は、地球環境問題に対する取り組みとして、地球規模の視点より、日本での行動を重視することを目指す。
☐ ○ ☐ ×

問2
持続可能な社会を目指すうえで大切なこととして、個人の権利に対する意識がある。
☐ ○ ☐ ×

◎ 環境問題に対しての考え方
問3
地球規模の環境問題は、公害問題と異なり因果関係が明確なので、法規制だけで対応していることができる。
☐ ○ ☐ ×

◎ 地球・自然・資源
① 地球の歴史
問4
石灰・石油・天然ガスなどの化石燃料のものは、大量の植物や動物である。
☐ ○ ☐ ×

Eco certification



Our system for visualizing power consumption



Solar power system



Roof greening initiative

Enhancing lighting facilities at each production plant (Reduction in power consumption: 145 MW·h)

Reducing CO₂ emissions by improving our lighting equipment is one of our main energy conservation initiatives, and it is proceeding according to plan. As energy consumption by lighting equipment in production plants is by no means low, we have focused on improving the ceiling lights in each production plant. To ensure the brightness of the working environment, we have taken measures such as switching to energy-efficient equipment, dimming the illumination, and turning off the lights when appropriate.



Cool white lamps



Daylight lamps

Use of energy-regenerating and energy-efficient equipment, and visualization of power consumption

Through the use of regenerative energy from motors and the adoption of energy-efficient equipment such as LED lighting, we have succeeded in minimizing the amount of electricity consumed. We are also promoting activities to increase awareness of energy conservation via visualization of power consumption for the main and sub-lines respectively.

Contributing to environmental conservation

JATCO promotes environmental activities in collaboration with the government, local communities, and NPOs. For example, we cut the aquatic weeds in the Tajuku River that flows through Fuji City. If left unattended, trash can accumulate in the weeds and raise the water level, which causes flooding. We will continue to contribute to environmental conservation as a good corporate citizen so that residents in the surrounding areas can live with peace of mind.



Development Efforts

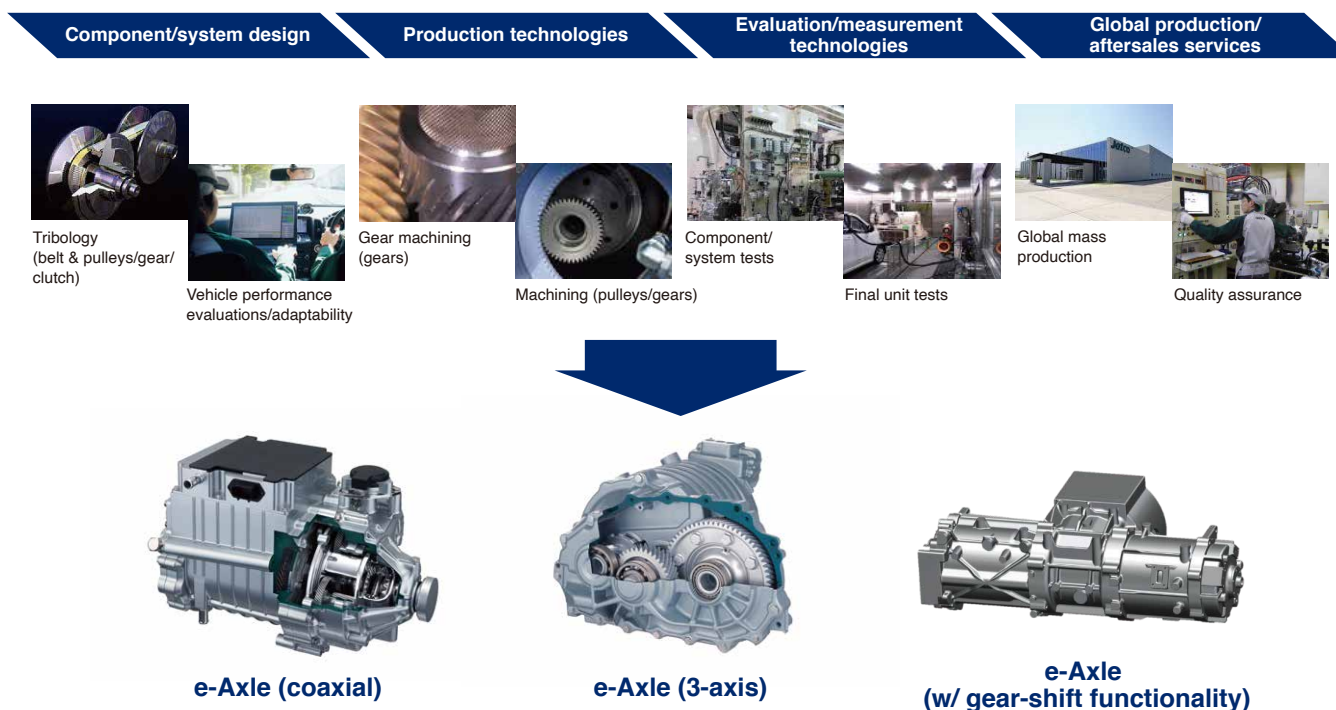


Utilizing our core technologies to accelerate product development

JATCO has worked to maximize transmission efficiency and improve fuel efficiency by adding speeds to transmissions, thoroughly reviewing transmission friction, improving controllability, and more. Even as the shift toward electrification continues to accelerate, we will accelerate the development of products that make use of our unique core

technologies, including gear technologies, and by the mid-2020s will bring to market our e-Axle unit for electrified vehicles that consolidates a motor, gears, and an inverter. By 2030 we aim to produce 5 million units per year for electric vehicles.

The basic, fundamental technologies supporting JATCO's streamlined development & manufacturing



Using virtual evaluations to reduce environmental load

By using computer simulation to predict the phenomena that occur in each functional component when a car is actually driven, we are replacing what had previously been our real-world vehicle tests with virtual experiments (HILS*, etc.).

In addition, by checking the new control system virtually, it has become possible to develop it without having to rework it when it is installed in an actual vehicle.

By proceeding with these virtual evaluations, not only is the development period shortened, but also the number of experiments using actual vehicles are reduced, leading to positive environmental effects such as reduced prototyping and reduced use of fuel for experiments.

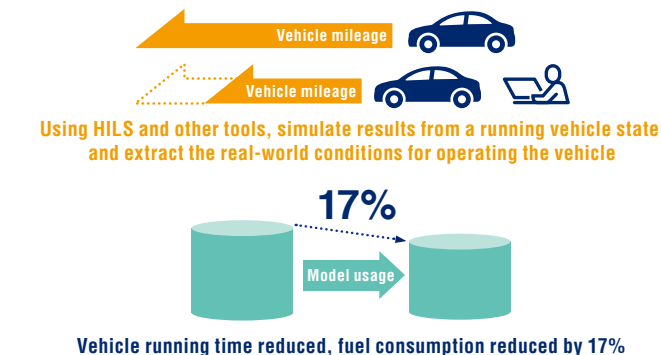
In addition, by applying the systems engineering methodology to our existing and next-generation products and expanding it globally, it is expected that our rework rate will be improved by 50%, which will not only shorten the development period but also reduce the amount of gasoline used by reducing the number of physical experiments.

*Hardware In The Loop Simulation



Virtual evaluation using HILS

Example results of virtual evaluations



Product & Technology Efforts



Existing products

Jatco CVT-X

CVT with dramatically improved environmental performance and drivability

JATCO's newly developed CVT, the Jatco CVT-X, is a product that pushes the limits of our technologies as a transmission manufacturer and has dramatically improved environmental performance and drivability. It is also compatible with downsized turbocharged engines that achieve high fuel efficiency and features characteristics such as thoroughly reduced friction. The Jatco CVT-X reaches an unprecedented level of perfection, even surpassing the 90% transmission efficiency barrier, a feat considered difficult for CVTs to achieve.



JR913E

9-speed transmission that provides both fuel efficiency and driving performance

The JR913E automatic transmission, built with a hydraulic system that selects the ideal gear ratios and enables responsive shifting, was developed for highly fuel efficient and highly responsive RWD vehicles. To reduce weight, we used magnesium for the transmission case, aluminum for the bolts around the transmission, and resin for the oil pan. Furthermore, to improve fuel efficiency, we minimized the mechanical losses from oil pumps, gears, clutches, and other parts, and optimally supply lubrication to each component according to the driving conditions, thereby achieving better fuel efficiency.



Nissan Ariya reducer parts

Parts for the reducer installed in the new Nissan Ariya

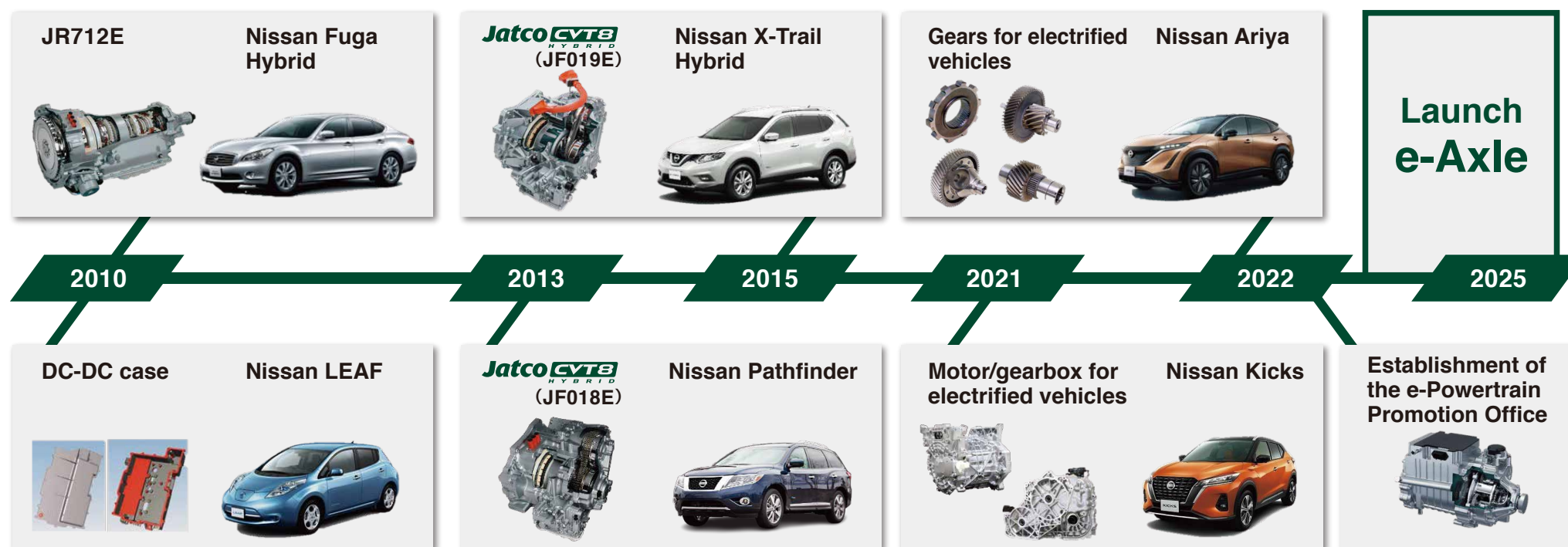
For the reducer in the new Nissan Ariya, Nissan's flagship EV, we supply five key parts: the final gear, input shaft, output gear, output shaft, and parking wheel. JATCO's gear technologies contribute to the quietness essential to the powerful yet smooth fine-driving experience characteristic to electric vehicles (EVs).



Product Efforts: Development



Introducing electrified products utilizing JATCO's proprietary technologies



For more than 10 years, JATCO has been accumulating know-how in preparation for the era of electrification. In 2010, we developed the JR712E, the world's first transmission for RWD hybrid vehicles that uses a one-motor, two-clutch system. In 2013, we launched the Jatco CVT8 HYBRID, the world's first transmission for FWD hybrid vehicles that uses a dry multi-plate

clutch for the coupling between the engine and the motor in the same system. In addition, since 2021, JATCO (Thailand) Co., Ltd., has started producing motors and gearboxes for the Nissan Kicks. In 2022 as well, we are supplying gear parts for Nissan's new flagship EV, the Nissan Ariya, where we are contributing to vehicle quietness, one of the Ariya's characteristic features.

Based on our accumulated know-how, in the mid-2020s, we will fully launch our e-Axle, a drive unit for electric vehicles that integrates a motor, gears, and an inverter.

3R Initiatives

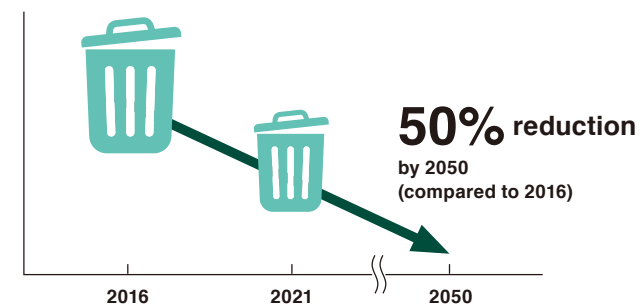
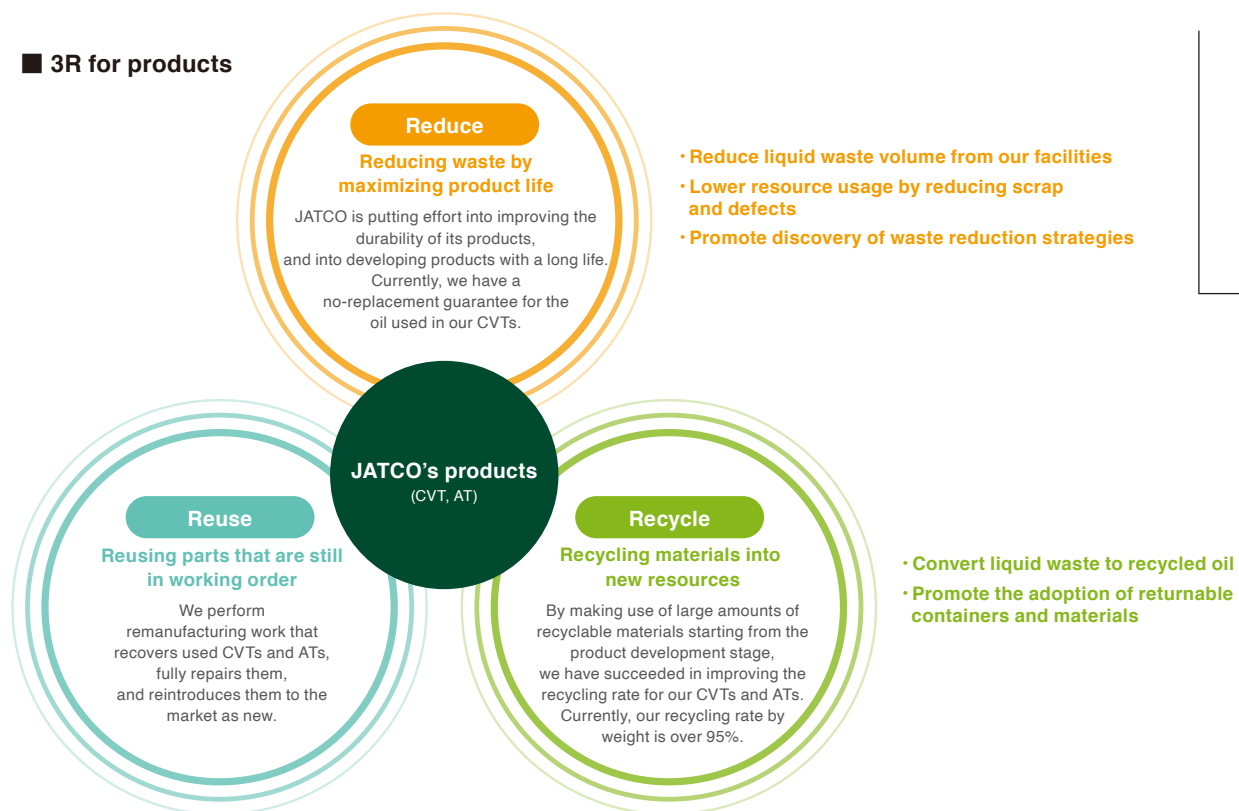
Taking action to realize a recycling society

The term “3R” is derived from the first letters of the three keywords for building a recycling society—reduce, reuse, and recycle. JATCO designs and develops its products to ensure that they can be used for as long as possible, thus aiming for reductions in waste. JATCO also

reuses usable parts from products that have been recovered from the marketplace. Finally, JATCO uses recyclable materials then recycles them into new resources. By doing so, JATCO ensures that it is contributing to the realization of a recycling-oriented society.

As for our waste reduction efforts, we have set reduction targets and are working towards their achievement. JATCO aims to reduce the amount of waste products per unit it produces by 50% by 2050 (compared to 2016).

■ 3R for products



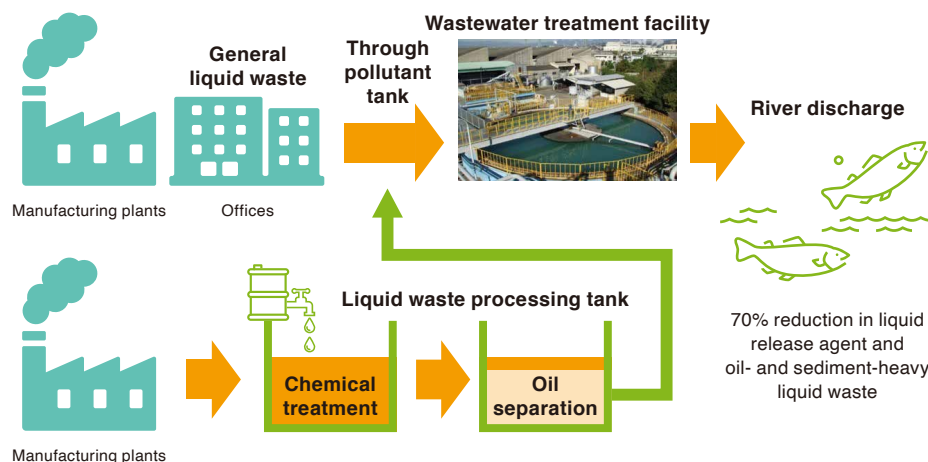
3R Initiatives



Reduce liquid waste from manufacturing plants

Wastewater discharged from our manufacturing plants and offices is sent to in-house water treatment facilities, treated into safe water, and then discharged into rivers. However, liquid release agent or liquid waste with large amounts of oil or sediment, cannot be treated to safe levels at water treatment facilities, so they have been processed externally as waste.

Therefore, to make it possible to treat the liquid waste, we repeatedly reviewed the chemicals used and our purification methods, and reduced the amount of liquid release agent and liquid waste with large amounts of oil or sediment by 70%.



Reducing environmental impact through direct carving of the mold

Due to the complicated shapes of the molds used in the die-casting and forging processes at JATCO, production had previously been carried out using electro-discharge machining. Today, however, we are moving toward direct carving with direct machining at the machining center. By improving the machining program and the cutting conditions, we have significantly reduced machining time and the amount of industrial waste generated.

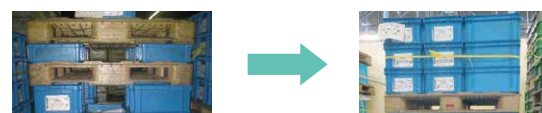


Die-cast mold produced through the direct carving process

Improvements in the transportation and packing of materials

As part of our efforts to improve our loading ratio, which contributes to a reduction in the number of trucks used, JATCO is taking steps to improve the packing density of purchased parts for delivery. Plastic containers and plastic cushioning material used to protect products during transportation and storage that had become unusable as a result of deterioration or product changes had previously been disposed of as industrial waste. However, after 2004, JATCO began reusing this material for other products. We have also gained the cooperation of companies engaged in the production of plastic to help us further reduce the waste we generate, such as by recycling our plastics into raw materials.

Improving the packing density of parts purchased

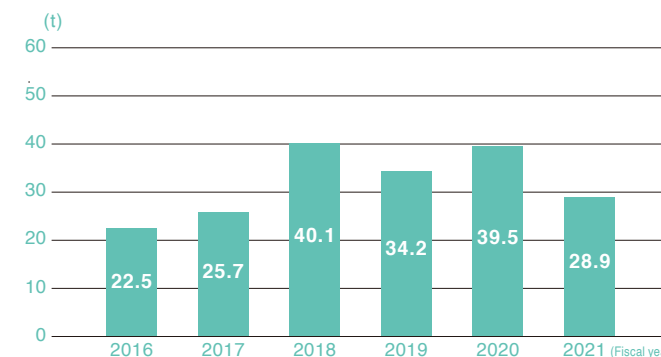


Eliminating wasted space not only improved transportation efficiency, but also made handling goods safer



Employees are also encouraged to keep containers clean

Trend in amount of plastic containers recycled or reused



3R Initiatives

Remanufacturing system

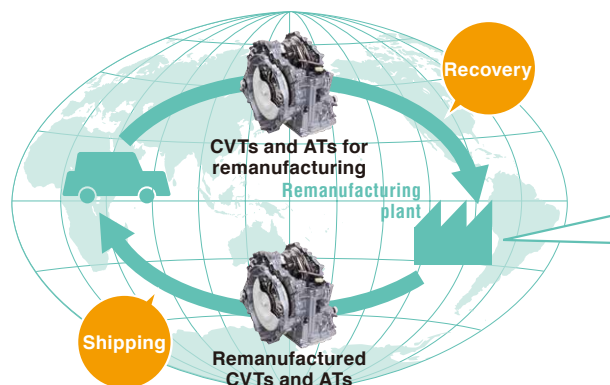
JATCO has been developing its remanufacturing technologies since 1989 as part of its CVT/AT unit reuse business. Remanufacturing involves recovering used CVT and AT units produced by our company from the maintenance shops of automotive dealers. These are then disassembled, cleaned and inspected, with components exchanged as required. After reassembly, a functionality test is performed to ensure an after-sales product that is no different in quality from a brand-new product, despite being used. This system allows for products to be offered to automotive users at a very affordable price. Our inspection standards have led to a PDCA cycle that has created an increase in demand for remanufactured parts. This has led to lower resource and energy use, thereby contributing to reduced CO₂ emissions and the mitigation of global warming. By adding inspection items specifically for the used parts and confirming the functionality of the parts using the same tests performed on our mass-produced new parts, we can ensure a level of quality equivalent to a new part. JATCO is also designing its products to make them both easy to

reuse and repair, thereby increasing the proportion of recovered CVT/AT units that can be reused. Furthermore, by performing detailed inspections of our recovered parts, we can feed these results back into our product development, thereby further improving product quality. This initiative has been praised for its major contributions to the efficient use of environmental resources, and received the Director-General's Award of the Japan Environmental Management Association for Industry of the Ministry of Economy, Trade, and Industry at the FY2017 Resource Recycling Technologies and Systems Awards (hosted by the Japan Environmental Management Association for Industry with backing from the Ministry of Economy, Trade, and Industry). JATCO currently performs its remanufacturing in Japan (for the Japanese and European markets) and Mexico (for the North American market), while also coordinating with local repair companies in China, thereby working to improve its 3R initiatives globally. JATCO will continue to expand these operations globally, thereby contributing to a higher-level of global environmental protection.



Received the Director-General's Award of the Industrial Science and Technology Policy and Environment Bureau of the Ministry of Economy, Trade, and Industry

■ Processes in the remanufacturing business



Waste Reduction & Substance Management

〈Waste reduction activities〉

Amount of direct landfill waste

Zero

Implementation of zero-emission initiatives

At JATCO, in order to encourage the reduction of waste, we have incorporated the goal of producing zero waste into the management of activities in our environmental management system (ISO14001) and are promoting initiatives toward the achievement of this goal. As a result of these initiatives, in 2009 we were able to reduce our direct landfill waste to zero at our locations in Japan. We are putting effort into reducing our direct landfill waste overseas as well.

■ Trend in the amount of direct landfill waste (Japan)



Zero waste for 13 consecutive years

Recycling rate

100%

Efforts to sort waste thoroughly for recycling

As part of our zero-emission initiatives, JATCO has eliminated waste disposal through incineration and landfills, and is promoting thermal recycling (conversion to fuel) and material recycling (reuse and recycling). We are also putting efforts into sorting our waste in order to enable the effective reuse of this waste as resources. Through these initiatives, we have succeeded in attaining a 100% recycling rate at our locations in Japan.

Initiatives to reduce waste through company-wide participation

Total waste generated in FY2021

65.5% reduction (Compared to FY2006)

JATCO employees are always asking, "Can it be reduced? Can it be reused? Can it be used for other purposes?" To make it easier to recycle items that we have no choice but to discard, we establish sorting standards and dispose of waste in line with these standards. At each location, we establish waste reduction targets, register ideas for initiatives implemented at each workplace, and share information on reducing waste to improve employee motivation at each workplace.

〈Management of chemical substances〉

VOC emissions for FY2021

99% reduction (Compared to FY2000)

Management of volatile organic compounds

We implemented volatile organic compound (VOC) countermeasures to achieve our target of reducing total VOC emissions by 30% (compared to FY2000) by FY2010, based on the action plan formulated by the Japan Auto Parts Industries Association (JAPIA). As a result of these countermeasures, we were able to reduce VOC emissions by 98% by FY2006, 99% in FY2010, and 99% again in FY2021.

Soil and groundwater pollution countermeasures

As part of our soil and groundwater pollution countermeasures, we completely abolished the use of organic chlorine-based solvents, and are currently monitoring our past usage of organic chlorine-based solvents and their impact on the environment.

FY2021 emissions of three major hazardous air pollutants

None

Emissions of three major hazardous air pollutants

We were able to eliminate our emissions of three major hazardous air pollutants*1 in FY2006, and we have successfully prevented further emissions through FY2021.

Management of PRTR*2 substances

The amount of PRTR chemical substances handled by JATCO, calculated as the amount discharged and transported by domestic production facilities, is shown in the following table.

■ Amount of PRTR substances handled and discharged (FY2021)

Classification	Chemical substance	Amount handled	Amount discharged			Waste transported
			Air	Water	Soil	
Specific Class I Designated Chemical Substances	Dioxin(mg-TEQ/yr)	0	20.6	0	0	0
	Benzene	0	0	0	0	0
Class I Designated Chemical Substances	Ethylbenzene	1,500	4.9	0	0	0
	Xylene	58,800	13.1	0	0	0
	1, 2, 4-Trimethylbenzene	61,400	0.1	0	0	0
	1, 3, 5-Trimethylbenzene	0	0	0	0	0
	N-hexane	0	0	0	0	0
	Toluene	21,700	379	0	0	0

Unit: kg (mg-TEQ/yr for dioxins)

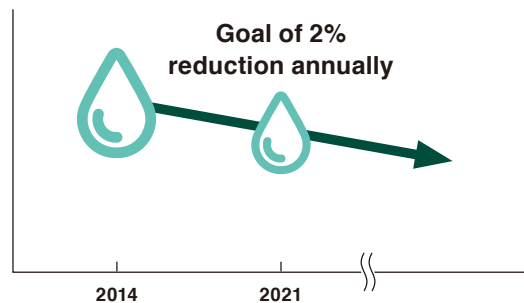
*1 Three major hazardous air pollutants: Dichloromethane, trichloroethylene, and tetrachloroethylene

*2 PRTR: Act on Confirmation, etc. of Release Amounts of Specific Chemical Substances in the Environment and Promotion of Improvements to the Management Thereof

Water Resource Management

Annual water consumption reduction target of 2%

JATCO tracks the amount of water used for production at our plants and is working to reduce it. In accordance with the “Nissan Green Program” formulated by our parent company, Nissan Motor Co., Ltd., we have been working on a comprehensive reduction of our water consumption since fiscal year 2014 as a countermeasure against global water depletion. With the goal of reducing the amount by 2% every year, we achieved a reduction of 32.9% in fiscal year 2021 compared to fiscal year 2014.



Maintaining high standards of purification

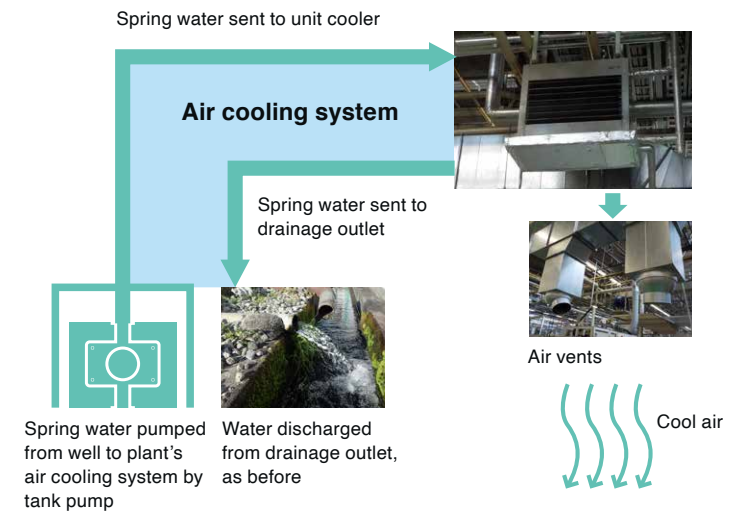
JATCO's production plants not only comply with the standards for water discharge established by national and municipal governments, but have also drawn up even more stringent purification standards for internal use. By combining facilities for activated carbon adsorption, ultrafiltration, high-speed aggregation precipitation, contact oxidation, sand filtration, and pressure flotation, we continue to maintain a high level of purification quality. Furthermore, we have installed water-saving valves on the water faucets at each of our domestic offices to reduce our water usage.



Water treatment facilities

Mt. Fuji spring water cooling

There is a natural spring within the grounds of Fuji Area 1 Plant at the foot of Mt. Fuji. This water used to be discharged through a drainage outlet, but since the temperature of the spring water stays at 15–17 degrees Celsius all year round, we use it as a natural cooler via the plant's cooling air system.



Water Resource Management



Reusing discharged water through the adoption of cold water circulation equipment

JATCO promotes the reuse of discharged water, and has adopted the use of cold water circulation equipment to purify the water used for the cooling and cleaning of production equipment, as well as for the thinning of cutting oil.



Cold water circulation equipment at forging facilities

Implementation of rainwater measures

Rainwater that falls on the premises of our production plants is discharged through drainage outlets directly into rivers. Employees use cameras to monitor the drainage outlets at all times to prevent rainwater that has been polluted by oil and grease from roads and buildings on the premises from flowing into rivers. To enable prompt identification of the drainage outlets, employees have manually color-coded the outlets. This not only prevents the accidental use of these drains for polluted water, but also raises awareness among all employees that these drainage outlets lead to rivers. In the unlikely event that oil leakage from employees' cars or from vehicles transporting parts and products within the premises should flow into the drainage outlets, gates have been installed where the drains connect with rivers in order to prevent these pollutants from flowing through.



Color-coding of drainage outlets by employees

Safe and reliable transportation of polluted water

JATCO not only takes steps to reduce the incidences of water pollution, but also considers safety when transporting polluted water to treatment facilities. Measures have been put in place at the facilities where parts are cleaned to enable the repeated reuse of water after pollutants have been removed from it. After reusing this water for several months, it is then transported to a treatment facility by truck. Given the fact that transportation of polluted water to treatment facilities through underground pipes and gutters is method that is easily impacted by the passage of time and has reliability issues, we are also making improvements by switching to transportation of this water using aboveground pipes that are visible to employees.



Transportation to a treatment facility via a dedicated waste transportation truck

Environmental Communication

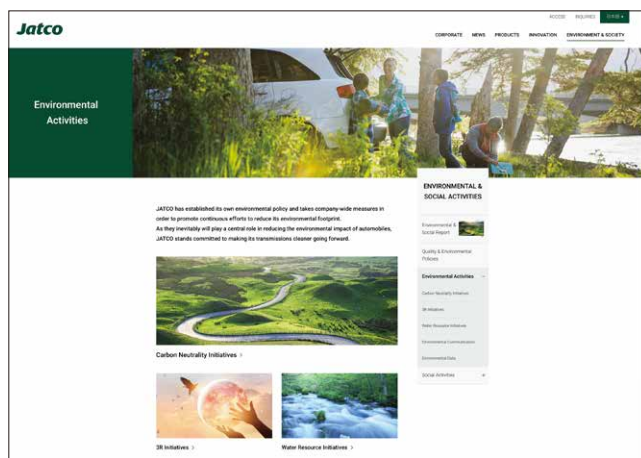


Aiming for proactive information disclosure

JATCO aims to be proactive in disclosing information about its environmental initiatives.

In order to promote widespread understanding of our activities amongst our stakeholders, we have published our Environmental Report since 2005. From 2009 onwards, we expanded the focus to include societal topics, and changed the title to the “Environmental & Social Report.” The 2015 report, which marked the 10 year milestone since its first publication, underwent a complete design revision to make the report easier to read and understand. The various initiatives published in the Environmental & Social Report are also posted on JATCO’s company website. Additionally, we are working to further disseminate this information to wider society by actively registering it on internet websites for searching and browsing CSR and environmental reports.

Environmental & Social Report: <https://www.jatco.co.jp/english/society/reports.html>
JATCO’s environmental initiatives: <https://www.jatco.co.jp/english/society/environmental/>



Environmental Activities page on JATCO’s website

Considering and nurturing the environment together with local communities

Hosting of factory tours

JATCO hosts factory tours for numerous organizations, including local elementary, middle, and high school groups, as part of our open factory initiative. During our factory tours, we introduce our 3R (Reduce, Reuse, Recycle) stance, such as the fine-grained separation of production waste and use of any recyclable waste in new products. Furthermore, we run a program where visitors can experience the process of using lab equipment to filter waste water produced by our plant to create clean water. Additionally, in FY2021 we held online factory tours for local elementary schools.



An online factory tour

Cleaning the neighborhoods around our locations

JATCO proactively contributes to society and engages in environmental conservation at each of its locations. For example, along the Taki River, which flows to the east of our headquarters, we are continuing to mow the banks and plant red spider lily bulbs. We are also working with a local NPO to develop a promenade and are aiming to create an environment where local residents can enjoy walking. At our office in the Motegi area of Tochigi prefecture, we began beautification activities in 2020 to protect the area’s cultural sites, and we are working to protect the local environment.



Cleaning a Motegi Cultural Property

Environmental Communication



Protecting Mount Fuji, a World Heritage site

JATCO's headquarters are located in Fuji City at the base of Mt. Fuji, and the company carries out numerous environmental activities to protect this registered World Heritage site. For example, in conjunction with the opening and closing of Mt. Fuji's climbing routes, volunteer members gather to clean and pick up trash along the climbing route that runs from the coast to the summit. Another activity we promote to care for the mountain is the planting of beech trees near its base in collaboration with other local companies. We also support the Waterside Expedition, which teaches the importance of protecting Mt. Fuji's abundant water resources through activities such as the release of fry into rivers, and the study of both the mechanisms of and the living creatures in springs, while also cooperating with universities, the prefecture, and the city to work on environmental education initiatives. Furthermore, we work with local NPOs and companies to plan and implement aquatic weed cutting in a nearby river and grass cutting and flower bulb planting along the embankments to preserve the landscape and turn local rivers into ones beloved by local residents. Employees wearing our company's green vests volunteer their time proactively to participate in all of these activities, which provides them with a great opportunity to think about the environment.



Releasing fry



Planting equinox flowers



Mt. Fuji Clean Route 3776



Cleaning Mihomasaki Beach



Waterside Expedition



Cutting aquatic weeds in the Tajuku River

Note: Due to the impact of the COVID-19 pandemic, activities were suspended in FY2021.
Photographs shown are from earlier years.

Reducing Environmental Impact At Overseas Bases



JATCO MEXICO S.A. DE C.V.

Since its establishment in April 2003, JATCO MEXICO S.A. DE C.V. has promoted various environmental initiatives, including formulating an environmental policy, participating in the energy conservation initiatives of their power suppliers, and promotion of waste sorting to improve their recycling rate. In particular, it established an environmental management system in 2009, and acquired ISO14001 certification in May 2011. Three committees have been established to oversee the environmental management system—the Environmental Committee, and under that, the Environmental Legal Requirements Sub-Committee and the Energy Conservation Sub-Committee. The Environmental Committee is led by the president and vice-president of the company, and is comprised of representatives from each division. It engages in comprehensive deliberations, assessments, and follow-up on activities related to the environment. The Environmental Legal Requirements Sub-Committee deliberates on and promotes efficient operation for each group that uses electricity, water, gas, or other power sources. Annual environmental targets are also established with the aim of reducing environmental impacts. Furthermore, by reflecting on the previous year and setting targets for the next fiscal year, continuous efforts are being made to improve on their environmental management system.

■ JATCO Mexico's resource consumption

Energy	FY2020	FY2021
Electricity	169,617,431kW·h	172,062,929 kW·h
Natural gas	796,922 m ³	1,290,724 m ³
Propane gas	150t	—
Water	307,989 m ³	329,334 m ³

JATCO (Guangzhou) Automatic Transmission Ltd.

Established in 2007, JATCO (Guangzhou) Automatic Transmission Ltd. began formulating its environmental management system in 2013 and acquired ISO14001 certification in March 2014. While aiming “for the realization of a society where the environment and cars can coexist,” it established an Environmental Committee and an ISO Office to run the environmental management system. The Environmental Committee is comprised of general managers, assistant general managers, and representatives from each division, and it conducts comprehensive management, assessment, and follow-up on environmental activities. The ISO Office is under the engineering division, and carries out assessments on compliance with environmental legal requirements as well as the implementation of other everyday items. Additionally, in order to reduce its environmental impact, JATCO (Guangzhou) Automatic Transmission Ltd. started energy saving activities in 2014, aiming to reduce its energy consumption by 3% when compared to its previous fiscal year.

■ JATCO Guangzhou's resource consumption

Energy	FY2020	FY2021
Electricity	109,968,489 kW·h	87,337,703 kW·h
Natural gas	—	—
Propane gas	—	—
Water	161,703 m ³	131,685 m ³

JATCO (Suzhou) Automatic Transmission Ltd.

JATCO (Suzhou) Automatic Transmission Ltd. began production in November 2019 and is establishing an environmental management system to acquire ISO 14001 certification in FY2022. Ongoing initiatives in this effort include the establishment of an environmental committee and joint environmental activities with local companies to contribute to the community. To reduce hazardous waste which can impact the environment, it is introducing equipment for separating shavings and cutting oil and for reducing VOCs in the exhaust from their heat treatment vacuum carburizing furnaces. While working with the environmental ministry, it is aiming to becoming an even more environmentally friendly company.

■ JATCO Suzhou's resource consumption

Energy	FY2020	FY2021
Electricity	29,598,000 kW·h	27,699,000 kW·h
Natural gas	36,000 m ³	36,000 m ³
Propane gas	—	—
Water	43,438 m ³	43,156 m ³

JATCO (Thailand) Co., Ltd.

JATCO (Thailand) Co., Ltd., which began production activities in September 2013, began formulating its environmental management system as soon as it was established, and in February 2016, acquired its ISO14001 certification. It has also formulated a plan called “JATCO Thailand Green Action” with the aim of further reducing its environmental impacts. In line with this, it plans measures to reduce environmental impact in collaboration with local companies such as:

1. Bulk purchase of molten metal together with other companies
2. Introduction of a vacuum carburizing heat treatment facility
3. Purification of water discharged from the production plant
4. Reuse of resource materials through sorting and recovery
5. Maximization of the proportion of green spaces on plant premises

■ JATCO Thailand's resource consumption

Energy	FY2020	FY2021
Electricity	14,555,600 kW·h	19,590,020 kW·h
Natural gas	—	—
Propane gas	17.46 t	20.12 t
Water	34,025 m ³	42,824 m ³



Part 2

Social Activities

JATCO strives to be a company with a wide societal reach, and to that end, we engage in a variety of activities. In order to build relationships of trust with all of our stakeholders and resolve the various issues confronting society, we aim to be a corporation that is well loved and trusted by the people, and that contributes to the development of a sustainable society.

Our Stakeholders

JATCO's stakeholders

JATCO's business activities are founded upon the trust between the company and its various stakeholders. We engage in business activities while considering the opinions of all our stakeholders and the needs of society, and we consider it important to build our relationships based on trust. JATCO responds to the changing needs of customers, and provides products of value while giving top priority to safety and peace of mind. We also pursue true customer satisfaction by engaging in the highest standards of manufacturing excellence in the world. Through fair trade with our business partners based on mutual trust, we are working to achieve mutual growth and "for the realization of a society where the environment and cars can coexist." We also aim to train our employees to match the needs of the times, respect diversity, and create a motivated workplace where each and every employee can experience growth. We will continue to contribute to local communities and engage in communication activities deeply rooted in local communities in order to be a good corporate citizen in all the regions in which JATCO conducts business.



With Our Business Partners



Building partnerships of mutual growth

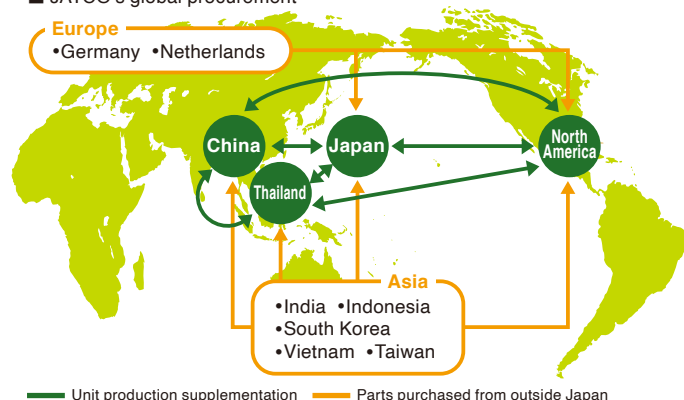
Contributions to the development of society and the maintenance and strengthening of cooperative relationships

JATCO strives to bring about mutual growth and “for the realization of a society where the environment and cars can coexist,” based on the relationships of trust that we share with our business partners. To that end, it is important to work together in accordance with standards that are fair, just, and transparent. We follow clearly established rules, as represented by our “Green Procurement Guidelines,” in selecting our business partners, and present awards to outstanding corporations.

Procurement in the global market

In light of the expansion of our production activities in Mexico, China, and Thailand, we are encouraging local production and the procurement of materials from highly competitive overseas sources in order to increase competitiveness while ensuring fairness in the global market and improving efficiency in the shipping of parts.

■ JATCO's global procurement



Environmental initiatives

Promotion of the management of environmentally hazardous substances

In light of the expansion of the global market, JATCO promotes the management of environmentally hazardous substances in cooperation with our business partners with a focus on the following five items.

1. Global implementation of the JATCO Green Procurement Guidelines

Beginning with the head office in Japan, we manage environmentally hazardous substances on a global scale, including our overseas affiliates.

2. Application of our guidelines to new business partners

We promote the management of environmentally hazardous substances among new business partners by clearly indicating our requirement of submitting green procurement documents.

3. Responding to environmental regulations and customer requirements

We do not limit the scope of items targeted for management to the data on chemical substances contained in our products, but rather extend it to the data on chemical substances in our packaging materials and shipping parts during transportation, as well as in recent years, the supplies used during the production process (for example, stationery items such as marker pens). Going forward, we will continue to put effort into minimizing the use of environmentally hazardous substances.

4. Thorough management and reduction of environmentally hazardous substances

Environmentally hazardous substances used in our products are controlled using JES M9001^{*1}. JES M9001 limits the use of chemical substances based on GADSL^{*2} (a list of controlled chemical substances for the automotive industries of Japan, Europe, and North America) and Japan's Chemical Substance Control Law (CSCL)^{*3}, and also covers the use of chemical substances restricted under the laws and regulations of the countries in which JATCO engages in business and as well as those restricted by regulations specified by individual JATCO customers. JATCO reviews JES M9001 at least once a year and measures are put in place to manage and reduce environmentally hazardous substances in order to remain ahead of global environmental laws and regulations.

5. Promoting the management of environmentally hazardous substances through the utilization of IMDS^{*4}

Corresponding with this era of “No Data, No Market” (no sales without data), we are cooperating with business partners to jointly promote with the development division the management of highly detailed data using IMDS.

Promoting green procurement activities

JATCO's green procurement activities tackle environmental conservation across all the products supplied by our business partners. The following are the three key points.

1. Verifying the intention to promote green procurement
2. Establishing an environmental management system
3. Reporting on the use of environmentally hazardous substances

JATCO makes it a precondition to purchase products from companies that are taking a proactive stance toward green procurement. We also request that our business partners encourage their suppliers to promote green procurement activities. JATCO awards business partners that have put particular effort into achieving JATCO's vision “for the realization of a society where the environment and cars can coexist.”



Suppliers meeting (FY2021 Business Partner Awards Ceremony and FY2022 JATCO initiatives)

^{*1} Jatco Engineering Standard (JES): Internal technical standards on restrictions for the use of specified substances ^{*2} GADSL: Global Automotive Declarable Substance List

^{*3} Act on the Regulation of Manufacture and Evaluation of Chemical Substances ^{*4} IMDS: International Material Data System

For Our Customers

JATCO's quality policy

For the realization of superior quality that continues to be trusted by customers

Customers are the ones who ultimately assess the quality of JATCO's products. Responding sincerely to assessments from our customers serves as our starting point for meeting the expectations of our customers. In order to achieve the high quality that our customers can continue to place their trust in, it is necessary for JATCO to provide products and services that exceed their expectations, based on our world-class monozukuri capability. Amidst the global expansion of our business, it is vital for us to ensure that we offer quality that JATCO can take pride in regardless of the region or country that we are in. JATCO constantly strives to improve itself and to seek innovation while closely observing global laws. We believe that this approach can contribute to the creation of a comfortable and safe automotive society.

■ JATCO's quality policy



For Our Customers

Aiming from a customer's perspective to be the world's no. 1 in monozukuri

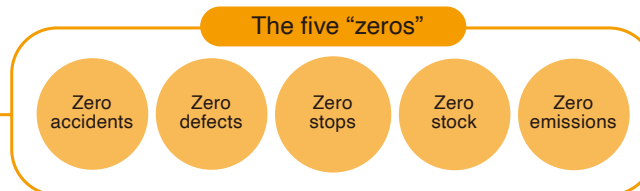
JATCO aims to respond swiftly to changing customers and to be the world's no. 1 in monozukuri in the aspects of quality, time, and cost. To that end, we have established, and are utilizing, a unique production system known as the JATCO Excellent Production System (JEPS). JEPS eliminates all waste by operating the entire series of processes, from assembly to shipping, at

the same speed and in the same order as if they were on a single line, and carrying out production and transportation in a timely manner. Through JEPS, we bring about the realization of two "unlimiteds" across our whole supply chain—unlimited synchronization with our customers, and unlimited innovation and realization of challenges.

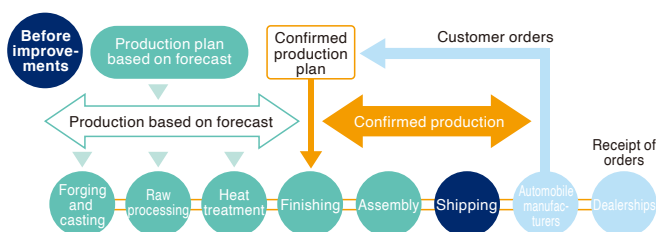
Promoting JEPS innovation

The basic concept of JEPS can be summed up in the following two points: unlimited synchronization with our customers, and unlimited innovation and realization of challenges. To pursue these two "unlimiteds," JATCO has established clear metrics in the form of the five "zeros." Toward the achievement of these metrics, JATCO continuously improves JEPS and promotes energy and resource conservation.

The five "zeros"



JATCO's monozukuri



The two "unlimiteds"

1. Unlimited synchronization with our customers

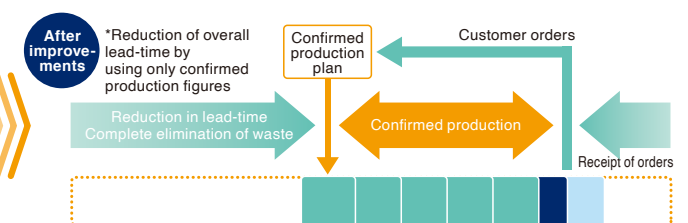
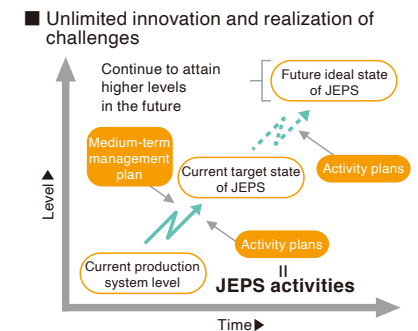
Q : Quality synchronization – producing the quality demanded by our customers

T : Time synchronization – Reducing production lead time to get as close to the customer as possible

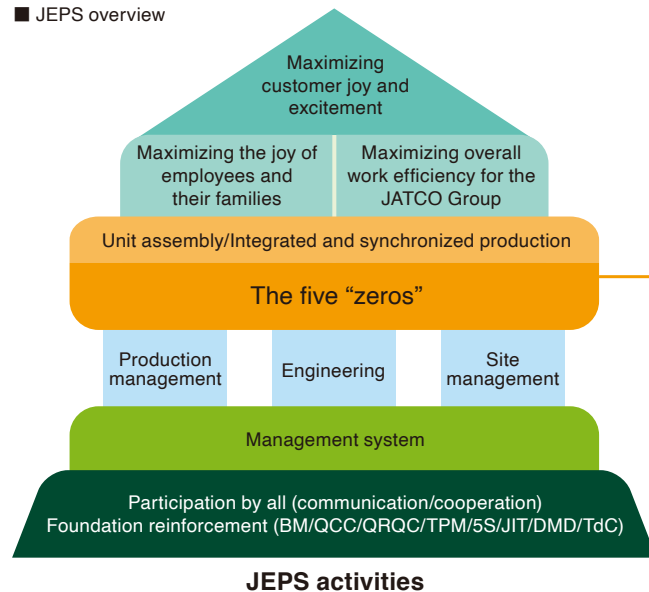
C : Cost synchronization – Increasing added value that customers are willing to pay for. JATCO aims to pursue these three synchronizations to move infinitely closer to our customers.

2. Unlimited innovation and realization of challenges

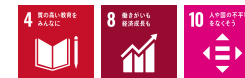
While recognizing the gap between our current state and the ideal state that JATCO should strive for as the world's no. 1 in monozukuri, we are striving to make visible the challenges we have had difficulty admitting to. We are continuously trying to improve our monozukuri system through repeated improvements and innovation.



■ JEPS overview



With Society



Making societal contributions a part of our corporate culture

The JATCO Group's aim is to become a “good corporate citizen” that is loved by local communities. Corporate activities are conducted through our involvement with local communities. JATCO considers it an important responsibility to be actively involved with society as a member of the community, and to contribute to the local community in a variety of ways. We promote societal contributions with this approach in mind.

Our three key categories

Based on our desire to be a presence that local communities are glad to have, the JATCO Group has established the environment, education, and welfare as our three key categories for societal contributions. We are engaging in activities around the world in these three categories, and undertake activities that meet the needs of local communities.



Contribution activities for education

Kids Engineer

The Kids Engineer event is organized by the Society of Automotive Engineers of Japan. JATCO agrees with the spirit of this event, which is targeted at elementary school students and seeks to communicate the joy of monozukuri, and has participated in it since its inaugural event in 2008. While the FY2021 onsite event was cancelled due to the COVID-19 pandemic, we devised new methods and content and held the car building program remotely.



Kids Engineer event organized by the Society of Automotive Engineers of Japan

Hands-on learning for middle and high school students

For local middle and high school students we host hands-on learning courses in a wide variety of work environments, from development to production. We provide participants with experience to help children consider what type of work they want to do and what career paths to take in the future. The activities include CAD software operation, tours of testing facilities, experiencing next generation technologies at the Future Technology Center, factory tours, and factory work experience.



Hands-on learning for middle and high school students

Note: Due to the impact of the COVID-19 pandemic, activities were suspended in FY2021. Some of the photographs shown are from earlier years.

Contribution activities for the environment

Hana-saku JATCO-MAE Station Project

The nearest train station to JATCO Fuji Area 1 is the JATCO-MAE station on the Gakunan Line in Fuji City. It is one of the very few stations in Japan that are named after a company. This project at the station began when a JATCO employee expressed their wish to “turn the local train station named after JATCO into a popular flower-viewing spot,” and it has run continuously since FY2015. In addition, we are contributing to a brighter, more cheerful town by running a train decorated with a wrapping of moss phlox blossoms. The flowers that we planted are being maintained daily together with the local community.



Planting moss phlox flowers around JATCO-Mae Station on the Gakunan Line

Supporting the traditional tea-grass integrated system in Shizuoka

The tea plantations in Higashiyama in the city of Kakegawa use the traditional tea-grass integrated system, which is certified as a World Agricultural Heritage System. The tea-grass integrated system is a traditional method that nurtures rich biodiversity and works in harmony with nature. Every year in January, JATCO cooperates with the Kakegawa Tea Promotion Association and Kakegawa City Hall as volunteer help for the tea-grass integrated system to help clear the silver grass and bamboo grass and lay them between the tea trees.



Working to lay the silver grass and bamboo grass between the tea trees

Contribution activities for welfare

Soccer matches for athletes with intellectual disabilities

Soccer players with intellectual disabilities have only limited opportunities to demonstrate the results of their training. Accordingly, JATCO has been organizing the “JATCO × Yokohama F. Marinos Futuro Cup” together with the Yokohama F. Marinos soccer club since FY2015. Unfortunately, the FY2021 tournament was cancelled, but we will continue to support many athletes with intellectual disabilities, along with their teams, with the goal of them participating in this tournament and having an opportunity to once again know the joy of soccer.



JATCO × Yokohama F. Marinos Futuro Cup

Powerchair soccer tournament

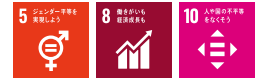
Powerchair soccer is soccer for players with severe disabilities who cannot walk on their own due to muscular dystrophy or cerebral palsy, and the players ride in power wheelchairs during matches. Since first joining the Yokohama F. Marinos-sponsored tournament in FY2019, JATCO has supported these athletes utilizing our technologies. Starting with the JATCO pit, where we remove and install the foot guards powerchair soccer players use instead of their feet, we are taking steps to realize better powerchair performance. In the future, we will continue to provide support that leverages JATCO's technological prowess.



Powerchair soccer tournament

Note: Due to the impact of the COVID-19 pandemic, activities were suspended in FY2021. Photographs shown are from earlier years.

With Our Employees: Diversity



Diversity at JATCO

In order to expand our business globally in response to changing times, JATCO positions diversity as a value to be cherished by our employees. JATCO's diversity involves engaging in a variety of initiatives with the objective of generating new ideas and providing better value to our customers by having employees with a wide range of values work together and exchange opinions while treating one another with respect. Since FY2008, we have been conducting regular reviews by management personnel led by our president and actively promoting hiring and employee deployment that does not discriminate based on gender, nationality, or other such criteria.

Diverse work styles

JATCO aims to build a workplace environment that not only enhances productivity but also enables everyone to work enthusiastically with a sense of security to enhance both personal and professional quality of life (QoL) for all employees. The expansion of both the flex time system, which enables employees to work according to their individual circumstances, and the telecommuting system, which can be used for purposes other than child rearing and nursing care, is one of the measures supporting the promotion of diversity. In July 2015, in recognition of our achievements, JATCO received the Special Certification Based on the Revised Act on Advancement of Measures to Support Raising Next-Generation Children (commonly known as the Platinum Kurumin Certification).

In March 2016, the Ministry of Economy, Trade and Industry selected JATCO as one of the Diversity Management Selection 100 for its example of "utilizing diverse human resources and providing opportunities for them to maximize their abilities, generate innovation, and create value." In both cases, we were the first company headquartered in Shizuoka Prefecture to be certified or selected.



Logo for the special certification based on the Act on Advancement of Measures to Support Raising Next-Generation Children, commonly known in Japan as "Platinum Kurumin" (left) and logo for the New Diversity Management Selection 100 (right)

Empowering women

JATCO works to empower women as one of the pillars of its diversity promotion efforts. We set targets for our ratio of female managers in our action plan based on the Act on Promotion of Women's Participation and Advancement in the Workplace, worked to develop our female staff, and have surpassed the average ratio by industry published by the Ministry of Health, Welfare and Labour. We also promote the role of women at our manufacturing facilities. Women can demonstrate leadership and pursue self-growth at our Diversity Lines, where everyone is made to feel welcome.



Encouraging multinational employees to play an active role

JATCO's diversity initiatives include encouraging employee hiring that does not discriminate based on nationality, and employee and technology exchanges with each of our overseas bases. In Japan, employees of various nationalities including Chinese, Korean, Mexican and Thai play an active role in Japan. Employees with a wide variety of values working at the same workplace and growing by learning something new from each other leads to the provision of new value to our customers.

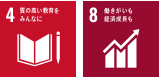
Promoting the active participation of individuals with disabilities

JATCO emphasizes the assignment of human resources that match the working abilities of individuals with disabilities, and hires people without restricting their job categories. We have established workplaces (diversity lines and indoor farms) where diverse individuals with diverse work styles can comfortably work, providing more new value by allowing employees to continue being active for a long time. We have achieved the statutory employment rate for individuals with disabilities, and our retention rate is over 90%.



EMPLOYEE DIVERSITY

With Our Employees: Global Talent Development



Achieving the mutual growth of our company and employees

JATCO regards each and every employee as important human capital that makes up the company, and we respect the diversity of each and every employee while proactively working to develop human resources with the aim of becoming a company where all employees can experience personal growth and job satisfaction.

Employees grow not only by gaining experience in their roles and solving problems in the workplace, but also by taking full advantage of a wide range of growth opportunities that are provided on an ongoing basis, including role-based skill development programs and trainings for problem-solving and communications skills. Supervisors support employees' growth through interview programs and ongoing on-the-job training.

For new employees who have taken their first steps into the workforce at JATCO, we have introduced a Freshman Leader System in which senior employees give daily consultations, guidance, and advice, providing support so that these new employees can enjoy a fulfilling corporate life at their assigned workplace and can take on work assignments with confidence.



Global training program

We also actively promote employee exchanges with overseas offices. Through short-term dispatch programs in which young employees are sent to overseas offices for several months to a year, we aim to have them build strong relationships with the overseas offices and to acquire a sense of global standards through a variety of experiences, not only in business but also in their daily lives.

In recent years, the use of DX tools has made it extremely easy to communicate with people overseas, so we have also started operating a new global training program that allows simultaneous online participation from multiple overseas offices.

The world is moving from an era of globalization to a borderless era. JATCO will continue to actively develop the human resources that will lead the next generation.

Employee development that supports overseas production sites

As part of JATCO's efforts to transfer the specialized skills and know-how regarding on-site management that we have built up over the years at our production sites in Japan to our overseas bases, we are working to provide training to the employees at these locations that aims to have them implement and operate using the same approaches and methods we use in Japan. To ensure that each country's supervisors are able to act as employee trainers to properly conduct each training course, we dispatch Nissan Motor certified instructors from Japan. Together with these local trainers who have received instruction, we are aiming to bring the employee development of all our JATCO employees around the world to the next level.



Providing guidance to employees at our overseas bases

Responding to globalization

Fostering a global mindset from an early stage

JATCO is working to develop employees that can handle global business. Overseas training for employees in their second year at the company fosters a global mindset and a desire for continuous self-growth by taking on a variety of tasks in an environment with a completely different language and culture.

With Our Employees: The Work Environment

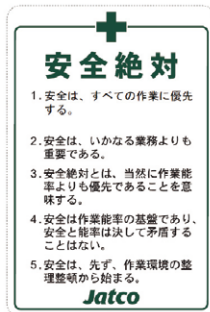


“Absolute Safety” is our key phrase

JATCO aims to move from “zero accidents” to “zero danger,” so promotes the development of a workplace where all employees can work safely and comfortably through measures such as the active completion of risk assessments at workplaces and the promotion of health management for employees. We recognize the task of ensuring safety as a priority in all our work, and have established “Absolute Safety” as our motto. In line with this, we engage in safety activities with a focus on on-site inspection, such as risk assessments, SES I*1, 5S patrols*2, plant (division) safety patrols, public work inspections, and safety commitment inspections. Particular emphasis is placed on eliminating non-standard processes that have a high risk of causing work accidents and may also cause losses in our production activities. The assessed risks of each production activity are summarized in a list. We establish the degree of priority and the appropriate countermeasures based on the size of the risk, and then speedily implement hard countermeasures, such as improving facilities, and soft countermeasures, such as training and guidance.

*1 SES I: Safety Evaluation System I. Our system for quantitatively assessing safety levels at the workplace

*2 5S patrols: Patrols of our sites on a regular basis to ensure compliance with the 5S methodology (Seiri [Sort], Seiton [Set in order], Seisō [Shine], Seiketsu [Standardize], Shitsuke [Sustain])



Implementing SES through our global members

Promoting occupational health

JATCO is advancing initiatives to help employees maintain good physical and mental health.

Certification as a “Certified Health & Productivity Management Organization 2022 (White 500)”

Every year since 2019, JATCO has been named one of the “Certified Health & Productivity Management Organization (White 500),” a designation from the Ministry of Economy, Trade and Industry that recognizes large corporations, small- and medium-sized enterprises, and other companies that practice excellent health management.

In order to realize this “health management,” JATCO has been making efforts towards work-style reform, creating a vibrant and comfortable workplace, and activities for secondhand smoke prevention and smoking rate reduction. JATCO will continue to work on “health management” as one of its important management issues in order to promote the health of each and every employee and to become a company that is a healthy, vibrant, and comfortable place to work in.



We continue to receive Health & Productivity Management Organization (White 500) certification. Every year since 2019, we have been certified as one of the “White 500,” a certification that is only awarded to the top 500 corporations.

Initiatives for mental health

Mental health measures are an important part of activities promoting employee health. Aiming for each and every employee to be able to vigorously carry out their activities, a countermeasures team was formed in the Human Resources Department to promote mental health activities, and it uses stress checks that encourage work environment improvement and provide opportunities to confirm individuals’ stress levels. It also carries out educational activities such as providing employee consultations with industrial physicians, occupational health nurses, and counselors; support for returning to work; and increasing public awareness. We also utilize outside EAP to provide an environment where employees can work with peace of mind through counselling, not just for individuals, but also their families.



Employees helping each other with mental health

Initiatives to improve lifestyle habits

As part of our measures to combat lifestyle-related diseases and metabolic syndrome, we provide health guidance based on physical examinations, hold events to raise awareness about diet and exercise, and conduct health evaluations through workplace visits by occupational health nurses. Through continuing these activities we provide a variety of support so that occupational health staff can achieve their goals.



Lifestyle-related disease prevention instruction

Activities to eliminate exposure to secondhand smoke and reduce smoking rates

Since 2003, JATCO has promoted measures to eliminate exposure to secondhand smoke and reduce the smoking rate. In order to eliminate passive smoking risk within the company, an initiative to eliminate smoking entirely at all locations was begun on April 1, 2017. This has significantly lowered employee smoking rates and has greatly reduced the risk from secondhand smoke. JATCO will continue to encourage our employees—our most important asset—to quit smoking in order to maintain their health by way of development activities that include continuing use of smoking cessation clinics, and maintaining a consultation desk at the health support office to help smokers quit.



Interviews with individuals who have successfully quit smoking are featured in cafeteria videos and the internal newsletter

SDGs Initiatives



External: Concluded the “Agreement for Community Development and Resolution of Regional Issues by Utilizing Bicycles” with Fuji City

In March 2022, we concluded the “Agreement for Community Development and Resolution of Regional Issues by Utilizing Bicycles” with Fuji City, where our headquarters is located. We are developing a new unit for electric-assist bicycles based on the technologies we have cultivated in cars since JATCO's establishment in 1970. Together with the government, we will contribute to tourism promotion and citizens' health, such as through the start of verification tests from FY2023.



External: Title Sponsor of the JATCO Mt. Fuji Cycle Road Race

On March 19 and 20, 2022, we were the title sponsor for the 1st JATCO Mt. Fuji Cycle Road Race held in Fuji City, Shizuoka Prefecture. Levante Fuji Shizuoka, a professional team that we sponsor, also participated in the event, and the race attracted 15,000 people over the two days. At the booth exhibition we introduced our SDGs initiatives in addition to our electric-assist bicycle unit.



Internal: Activities to promote the SDGs

SDGs lectures

We hold lectures on the SDGs for each division, including global divisions, to promote understanding of the SDGs by explaining the concept behind them and how they relate to JATCO's business activities.



Serialized internal web newsletter articles


We regularly convey information about the SDGs to employees so that employees feel more connected to SDGs.



As a result of these activities, employee interest in the SDGs has increased from 65% (June 2020) to 92% (March 2022).

Part 3

Corporate Governance



In order for JATCO to further enhance our value as a company that can continue to be trusted by our diverse stakeholders, it is vital to enhance our corporate governance system. In addition to building a management structure that combines a strong sense of ethics with transparency, all employees strive to raise their own awareness of and compliance with laws.

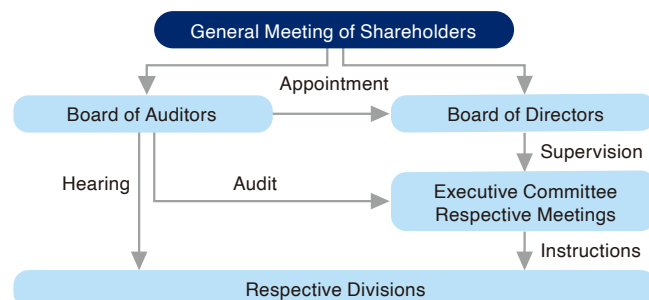
Governance Efforts

Commitment to corporate governance

Corporate governance system

JATCO is a “Company with Board of Company Auditors” as defined in the Companies Act, and is established as a legal entity with a General Meeting of Shareholders, a Board of Directors, and a Board of Auditors. In principle, the Board of Directors convenes once a month to decide on important management matters as well as to preside over the details of the operations being executed. The Board of Directors is composed not only of the directors who execute our operations, but also several directors from outside the company in order to create a system that allows for more objective supervision of the execution status of our operations. A Corporate Officer system has also been introduced to facilitate efficient and flexible management, and authority has been delegated to Corporate Officers in clearly defined ways in the management of the business.

■ JATCO's corporate governance system



Strengthening our internal control system

JATCO maintains and strengthens its internal control system based on the Basic Policy on Internal Control System passed by our Board of Directors. This policy lays out our basic policies on matters such as strict compliance with laws, information management, risk management, proper and efficient execution of work by directors, management of Group companies, and ensuring an effective audit system among the auditors. Regular checks are conducted to verify that the internal control system is functioning effectively, and the results are reported to the Board of Directors.

System for ensuring proper management of Group companies

In order to accomplish appropriate and efficient management of the JATCO Group, the JATCO Group companies, both domestically and abroad, are working together with each of the divisions in charge at JATCO to perform this management. To ensure that Group companies are able to undertake decision making that is consistent with our Group policy, information exchange is carried out through the Group's Management Committee. Furthermore, in order to check if the Group companies are being properly managed, internal and external auditors are regularly dispatched to conduct audits. Regular checks are conducted to verify that the internal control system in each company is functioning effectively, and the results are reported to the Board of Directors.

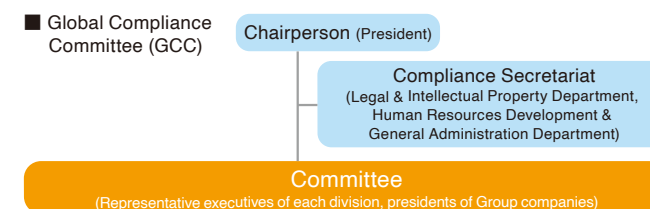
Strengthening compliance

Basic stance on compliance

The JATCO Group considers strict compliance with the laws of each country and region to be a minimum requirement for being trusted by society. In addition to strict compliance with laws, we consider it important for all employees of our Group to act fairly and honestly with a strong sense of ethics. JATCO has instituted a Global Code of Conduct, and we put effort into ensuring thorough compliance by providing action guidelines for all employees to abide by.

■ Standards in the Global Code of Conduct

1. Fully Comply with all Laws and Rules
2. Avoid Conflicts of Interest
3. Preserve Company Assets
4. Be Impartial and Fair
5. Be Transparent and Accountable
6. Value Diversity and Provide Equal Opportunity
7. Be Environmentally Responsible
8. Ensure Safety
9. Be Active; Report Violations



Promotion system for compliance

In order to promote compliance across the whole of the JATCO Group, JATCO has organized a Global Compliance Committee (GCC) comprised of representative executives from each division and the presidents of Group Companies in Japan and overseas, and holds regular meetings of this Committee. The GCC puts effort into ensuring the proper implementation of the PDCA cycle, such as by sharing common global matters related to compliance, sharing specific cases of incidents that have actually occurred, and checking the details of the compliance activities of each company. Compliance committees are also established in each respective Group Company, and these committees work together with the Compliance Secretariat while engaging in their own compliance activities.

Compliance education and activities to raise awareness

Code of Conduct training is provided once a year for all employees in the Group through the use of the e-Learning system. With regard to important legal matters related to the execution of work by employees, such as the prohibition of monopolization, prohibition of corruption, product safety, intellectual property, and export control, the Legal & Intellectual Property Department draws up and implements programs to educate employees.

Promoting the internal reporting system

The JATCO Group has established the Easy Voice System, which is an internal reporting system that allows employees to report directly to the company on matters such as rules violations. In addition, we have also established the SpeakUp that allows employees to report via phone or the website to a third-party organization, as part of our efforts to develop an environment where employees can take a proactive stance toward reporting violations.

Risk Management: Systems & Infosec

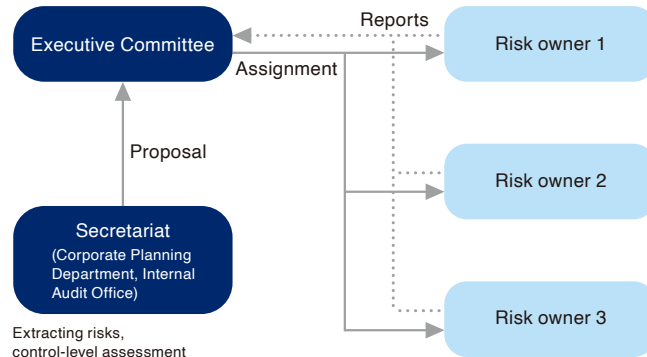
Risk management initiatives

Promoting risk management

In order to respond to the diversifying risks accompanying the global expansion of our business, JATCO carries out a risk management audit as part of its internal control system. Specifically, we identify risks each year, determine the items that should be tackled in the Executive Committee meetings, assign personnel to take charge of each item, and formulate and implement measures to mitigate the risks. The progress of initiatives for each item are reported at the Executive Committee meetings, and a control-level assessment for each item is conducted at the end of the fiscal year.

■ Risk management promotion system

Item selection, progress review



Initiatives through the BCM* Committee

There are scenarios that endanger business continuity, such as earthquakes, typhoons, or other natural disasters. JATCO predicts the various risks that may arise, and has established a BCM Committee to implement measures to eliminate risks before they develop and to mitigate risks when incidents do occur. If a situation arises that has continuous impact on production, the relevant parties are notified immediately, and the BCM Committee takes a central role in resolving the problem with the cooperation of the respective divisions across the company. BCM

simulation training is carried out every year to help employees learn how to react to a large-scale earthquake, and how to appropriately respond in order to achieve quick recovery.

*BCM: Business Continuity Management. This involves determining the countermeasures to take in situations where the company becomes unable to continue operations due to large-scale disasters, epidemics and the like and conducting the needed training and other activities to execute these countermeasures.

Risk management system for JATCO Group companies

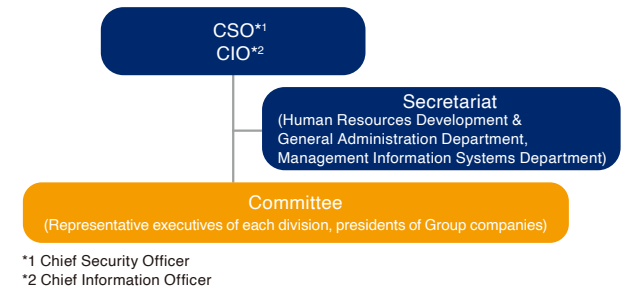
With regard to Group companies, including our overseas production bases, risk management is performed by implementing countermeasures for the expected risks to each company. The experience and know-how that JATCO has built up through its BCM activities are disseminated to the Group companies, and for risks that are common to all our facilities across the world, risk management is carried out in cooperation with other Group companies.

Strengthening information security

Information security promotion system

JATCO has enacted an Information Security Policy and conducts itself appropriately with regards to information security. The Information Security Committee, which operates in a Group-wide fashion, shares problems common to and solutions applicable across the Group companies, and checks on the implementation of these solutions in each Group company and division. An employee is assigned to oversee information security matters in each division and Group company, and they supervise the everyday management of those matters.

■ Information Security Committee



Commitment to information management, and promotion of training activities and activities to raise awareness

In order for us to maintain growth, more robust information security will be required. JATCO is putting effort into further strengthening our information infrastructure. To prepare for cyber attacks, we are implementing various technical measures to prevent external attacks, while engaging in thorough information management to prevent information from leaking out in the event of a security breach. Information security is dependent on there being a proper awareness of information management by those who must handle the information—each and every one of our employees. Hence, we continue to provide information security education to all employees in the JATCO Group once a year, and strive to raise awareness about information security management.

Information security activities in each division and Group company

In order to ensure the appropriate management of information security, it is vital to properly continue the PDCA cycle by having each division and Group company correctly grasp the current state of and risks pertaining to information security, then formulate and implement countermeasures, and review the results. Details on the information security activities undertaken by each division and Group company is shared with the Information Security Committee. By encouraging the divisions and Group companies to incorporate each other's best practices, we are striving to further enhance information security across all the Group companies.

Risk Management: Emergency Response

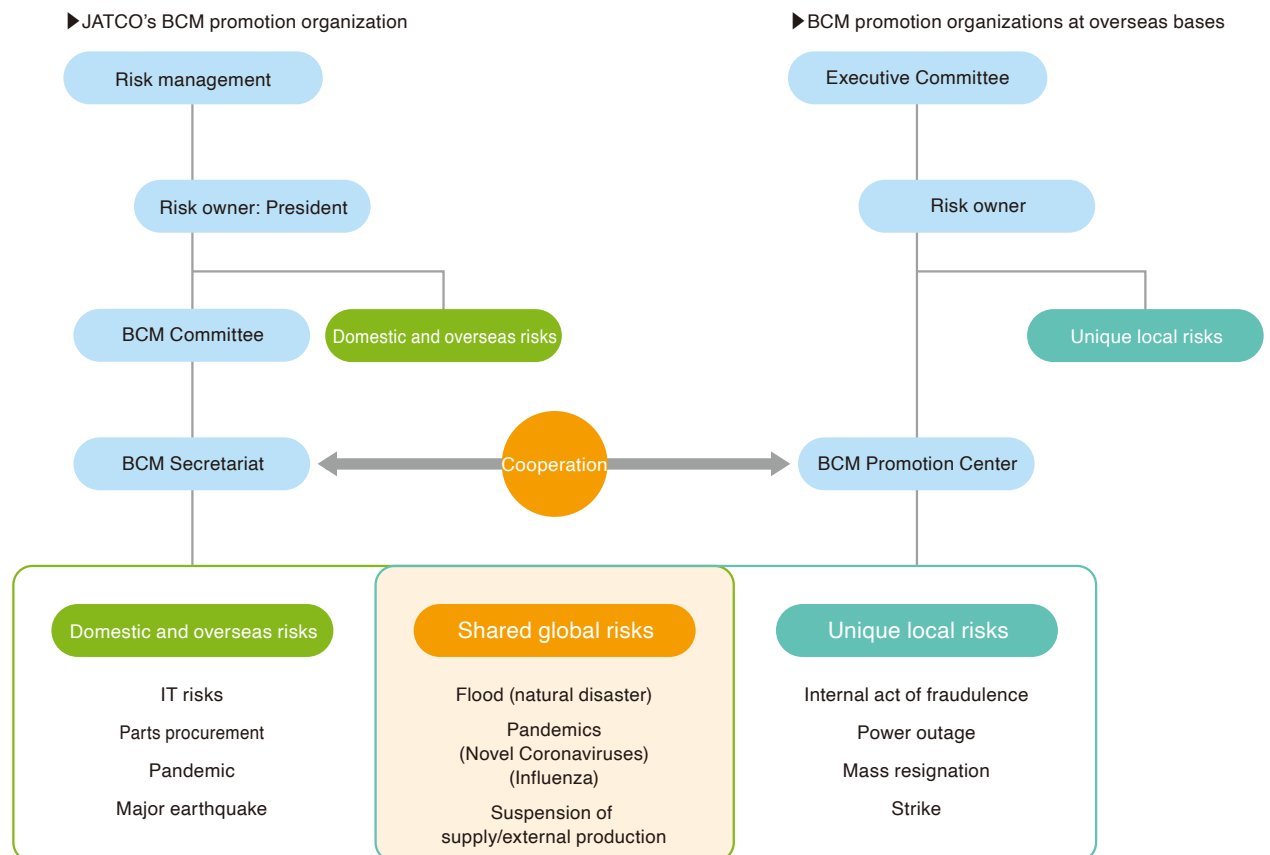
Ensuring business continuity in the event of a large-scale earthquake

As part of JATCO's BCM initiatives, we organize disaster preparedness activities with regards to a large-scale earthquake (seismic intensity of 6 Upper or greater) that is feared to occur in the near future. These activities are aimed first towards saving lives, preventing secondary disasters, and a prompt and effective recovery to aid in the recovery of our business. Our BCM formulations are being reviewed and strengthened through our experience from such disasters as the Niigata Chuetsu-oki Earthquake in July 2007, the Great East Japan Earthquake in March 2011, and the earthquake in eastern Shizuoka Prefecture in March 2011, which resulted in significant damage to one of our plants. The disasters that we prepare for are not limited to just earthquakes. They cover a wide range that includes novel strains of coronavirus, IT failures, and supply chain stoppages. We also apply the experience that we have gained in developing BCM in Japan to the risks facing our overseas locations, including Mexico, China, and Thailand to extend our BCM practices globally across the entire JATCO Group. In order to promote activities focused on our supply chain in light of our experience during past disasters, we have made efforts to strengthen our overall supply chain by performing diagnoses of the BCM systems of each Group company. JATCO's highly effective BCM is driven by the repeated use of training. We have been conducting BCM simulation training every year since FY2008, through which we confirm our initial disaster response and recovery system for business continuity. This training is based on expected levels of damage and involves the relevant departments and company bases working together to solve problems related to business recovery. These problems include how to respond to automobile manufacturers, business partners, local communities, and the media. Through the repeated use of this training, we aim to provide a speedy response in the event of a disaster. This emphasis on simulation training with a focus on cooperation between bases has already yielded results at our Fujinomiya Plant, when during the earthquake in eastern Shizuoka Prefecture, the plant was able to easily receive assistance from our other bases and make a rapid recovery.



BCM simulation training

■ BCM promotion organization

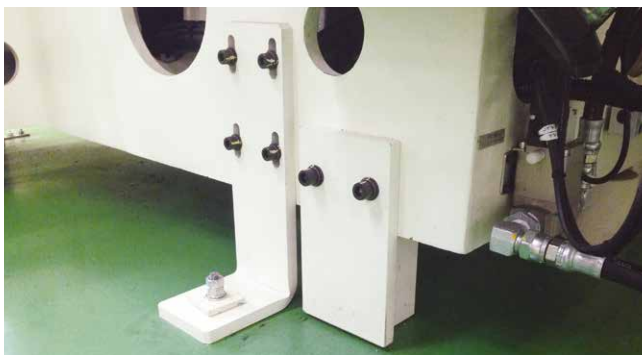


Risk Management: Emergency Response

Ensuring the safety of employees and the local community

Earthquake measures for buildings and facilities in Japan

In order to prevent damage to buildings and facilities and harm to employees in the event of a large-scale earthquake, as well as to achieve early recovery of production plant functions, we have taken a wide range of earthquake countermeasures that include securing production equipment at and strengthening the earthquake resistance of our main production bases in Japan, and taking measures to prevent objects from falling from ceilings or cranes. As a member of the supply chain, we are constantly coming up with countermeasures to minimize our impact on the production activities of our customers.



Newly added support leg on equipment

Earthquake countermeasures at overseas bases

JATCO operates globally and has implemented BCM activities at our overseas bases similar to those at our domestic bases to prepare them for earthquakes or other large-scale disasters.

At JATCO (Thailand) Co., Ltd., which commenced operations in July 2013, we have drawn lessons from the major floods that occurred in 2011, and raised the foundation filling of the building by 50 cm compared to the initial plans, in preparation for tsunami and floods.



Building site where the filling was carried out

Ensuring the safety of employees

In order to ensure the safety of employees in the event of a large-scale earthquake, JATCO has established detailed procedures with regard to evacuation actions and evacuation shelters. In order to ensure that employees have a good grasp of this information, regular drills are conducted based on a variety of day and night emergency situations that we expect could occur. Given the possibility of having employees at each facility who are unable to return home during an emergency, we have prepared supplies such as water, food, helmets, blankets, sleeping bags, and portable toilets at each facility.



Disaster preparedness supplies available at our various offices

Securing safety and peace of mind for local residents

JATCO is a company that stands together with local residents. Hence, we cooperate actively to secure safety and peace of mind for local residents. We are working to be included on municipal emergency shelter lists and to establish a system that allows us to provide company facilities as emergency shelters for local residents who have nowhere to evacuate to in the event of a large-scale disaster.

Environmental Data For Each Production Base



Air pollution

NO.: Nitrogen oxide, SO.: Sulfur oxide

Equipment	Item	Unit	Regulatory limit (including exceptions)	Measured values	
				Maximum	Average
Compact boiler (22 units)	Dust and soot	g/Nm ³	0.05	0.003	0.0002
	NO.	ppm	100	92	31
	SO.	Nm ³ /h	0.002	0	0
Metal-heating furnace (16 units)	Dust and soot	g/Nm ³	0.05	0.035	0.006
	NO.	ppm	150	33	9
	SO.	Nm ³ /h	0.018	0	0
Steel-heating furnace (4 units)	Dust and soot	g/Nm ³	0.05	0.004	0.0011
	NO.	ppm	150	6	2
	SO.	Nm ³ /h	0.026	0	0
Aluminum-melting furnace (11 units)	Dust and soot	g/Nm ³	0.06	0.045	0.005
	NO.	ppm	150	44	9.32
	SO.	Nm ³ /h	0.019	0	0
Drying kiln (1 unit)	Dust and soot	g/Nm ³	0.05	0.043	0.025
	NO.	ppm	56	28	22
	SO.	Nm ³ /h	0.0048	0	0
Drying combustion furnace (1 unit)	Dioxin	mg-TEQ/Nm ³	5	0.0000045	0.0000045
	Dioxin	mg-TEQ/Nm ³	5	0.000003	0.000003

Water quality

Figures shown in brackets () for the regulatory limit are daily averages

Item	Unit	Regulatory limit (including exceptions)	Measured values	
			Maximum	Average
Hydrogen ion concentration (pH)	—	5.8 - 8.6	7.4	7.4
Biochemical oxygen demand (BOD)	mg/L	20 (15)	4.5	4.5
Chemical oxygen demand (COD)	mg/L	20 (15)	5.3	5.3
Suspended solids (SS)	mg/L	20 (10)	2	2
n-hexane extracts (mineral oils)	mg/L	4	0	0
Copper	mg/L	0.1	0	0
Zinc	mg/L	1.0	0.08	0.07
Coliform count	units/mL	3,000	13	13
Trichloroethylene	mg/L	0.3	0	0
Dichloromethane	mg/L	0.02	0	0
Boron	mg/L	10	0	0
Fluorine	mg/L	15	0	0
Ammoniacal nitrogen	mg/L	100	0	0.0
Nitrate-nitrogen				
Nitrite-nitrogen				

Air pollution

NO.: Nitrogen oxide, SO.: Sulfur oxide

Equipment	Item	Unit	Regulatory limit (including exceptions)	Measured values	
				Maximum	Average
Kerosene boiler (2 units)	Dust and soot	g/Nm ³	0.1	0.001	0.00025
	NO.	ppm	130	74	47.5
	SO.	Nm ³ /h	0.045	0	0

*Aluminum melting furnace operations halted January 2019.

Water quality

Figures shown in brackets () for the regulatory limit are daily averages

Item	Unit	Regulatory limit (including exceptions)	Measured values	
			Maximum	Average
Hydrogen ion concentration (pH)	—	5.8 - 8.6	7.3	7.3
Biochemical oxygen demand (BOD)	mg/L	20 (15)	3.1	3.1
Chemical oxygen demand (COD)	mg/L	25 (20)	6.7	6.7
Suspended solids (SS)	mg/L	40 (30)	3	3
n-hexane extracts (mineral oils)	mg/L	5	0	0
Coliform count	units/mL	1,000	20	20.0
Dichloromethane	mg/L	0.02	0	0
Boron	mg/L	10	0	0
Fluorine	mg/L	8	0	0
Ammoniacal nitrogen	mg/L	100	0.1	0.1
Nitrate-nitrogen				
Nitrite-nitrogen				

Air pollution

NO.: Nitrogen oxide, SO.: Sulfur oxide

Equipment	Item	Unit	Regulatory limit (including exceptions)	Measured values	
				Maximum	Average
Compact boiler (6 units)	Dust and soot	g/Nm ³	0.05	0.004	0.00075
	NO.	ppm	100	84	37
	SO.	Nm ³ /h	0.01	0	0
Metal-heating furnace (3 units)	Dust and soot	g/Nm ³	0.05	0.01	0.003333
	NO.	ppm	150	77	45
	SO.	Nm ³ /h	0.01	0	0

Water quality

Figures shown in brackets () for the regulatory limit are daily averages

Item	Unit	Regulatory limit (including exceptions)	Measured values	
			Maximum	Average
Hydrogen ion concentration (pH)	—	5.8 - 8.6	7.5	7.5
Biochemical oxygen demand (BOD)	mg/L	20 (15)	1.4	1.4
Chemical oxygen demand (COD)	mg/L	20 (15)	2.5	2.5
Suspended solids (SS)	mg/L	20 (15)	0	0
n-hexane extracts (mineral oils)	mg/L	5	0	0
Phenols	mg/L	5	0	0
Copper	mg/L	3	0	0.00
Zinc	mg/L	2	0.08	0.08
Soluble iron	mg/L	10	0.03	0.03
Soluble manganese	mg/L	10	0	0
Chromium	mg/L	2	0	0
Coliform count	units/mL	3,000	0	0.0
1, 1, 1-trichloroethane	mg/L	0.001	0	0
Boron	mg/L	10	0	0
Ammoniacal nitrogen	mg/L	100	0	0.00
Nitrate-nitrogen				
Nitrite-nitrogen				

Environmental Data For Each Production Base

Kakegawa Area

Site: 95,522 m²
Buildings (Total):
14,954 m²



Kyoto Area



Yagi Area

Site: 233,323 m²
Buildings (Total):
68,277 m²



Air pollution

NO_x: Nitrogen oxide, SO_x: Sulfur oxide

Equipment	Item	Unit	Regulatory limit (including exceptions)	Measured values	
				Maximum	Average
Compact boiler (2 units)	Dust and soot	g/Nm ³	0.05	0	0.0000
	NO _x	ppm	100	46	20
	SO _x	Nm ³ /h	0.01	0	0

Water quality

Figures shown in brackets () for the regulatory limit are daily averages

Item	Unit	Regulatory limit (including exceptions)	Measured values	
			Maximum	Average
Hydrogen ion concentration (pH)	—	5.8 - 8.6	7.9	7.2
Biochemical oxygen demand (BOD)	mg/L	20 (15)	8	2.8
Chemical oxygen demand (COD)	mg/L	80 (60)	15.5	10.2
Suspended solids (SS)	mg/L	20 (10)	5	2.0
n-hexane extracts (mineral oils)	mg/L	3	0	0
Phenols	mg/L	2.5	0	0
Copper	mg/L	0.5	0	0
Zinc	mg/L	2	0.18	0.155
Soluble iron	mg/L	5	0.77	0.6
Soluble manganese	mg/L	5	0	0
Chromium	mg/L	1	0	0
Coliform count	units/mL	3,000	4	1.3
Cadmium	mg/L	0.03	0	0
Cyanide	mg/L	0.5	0	0
Organic phosphorus	mg/L	1	0	0
Lead	mg/L	0.1	0	0
Hexavalent chromium	mg/L	0.25	0	0
Arsenic	mg/L	0.1	0	0
Total mercury	mg/L	0.0005	0	0
Alkyl mercury	mg/L	Undetected	Undetected	Undetected
PCB	mg/L	0.001	0	0
Trichloroethylene	mg/L	0.1	0	0
Tetrachloroethylene	mg/L	0.05	0	0
Carbon tetrachloride	mg/L	0.01	0	0
1, 1, 1-trichloroethane	mg/L	1	0	0
Boron	mg/L	10	0	0
Ammoniacal nitrogen	mg/L	100	0	0.5
Nitrate-nitrogen				
Nitrite-nitrogen				

Air pollution

NO_x: Nitrogen oxide, SO_x: Sulfur oxide, ND: Below detection limit

Equipment	Item	Unit	Regulatory limit (including exceptions)	Measured values	
				Maximum	Average
City gas boiler	Dust and soot	g/Nm ³	0.1	ND	ND
	NO _x	ppm	150	55	55
	SO _x	Nm ³ /h	0.045	ND	ND

Air pollution

NO_x: Nitrogen oxide, SO_x: Sulfur oxide, ND: Below detection limit

Equipment	Item	Unit	Regulatory limit (including exceptions)	Measured values	
				Maximum	Average
Compact boiler	Dust and soot	g/Nm ³	0.1	ND	ND
	NO _x	ppm	150	51	41
	SO _x	Nm ³ /h	0.00	ND	ND
Continuous carburizing furnace	Dust and soot	g/Nm ³	0.1	ND	ND
	NO _x	ppm	150	63	43
	SO _x	Nm ³ /h	5.00	ND	ND

Water quality

Figures shown in brackets () for the regulatory limit are daily averages

Item	Unit	Regulatory limit (including exceptions)	Measured values	
			Maximum	Average
Hydrogen ion concentration (pH)	—	5.8 - 8.6	7.5	7.4
Biochemical oxygen demand (BOD)	mg/L	20 (10)	2	1.5
Chemical oxygen demand (COD)	mg/L	30 (20)	1.1	0.8
Suspended solids (SS)	mg/L	30 (20)	0.8	0.5
n-hexane extracts (mineral oils)	mg/L	2.5	Undetected	Undetected
Phenols	mg/L	0.5	Undetected	Undetected
Copper	mg/L	1.5	Undetected	Undetected
Zinc	mg/L	2.5	Undetected	Undetected
Soluble iron	mg/L	5	Undetected	Undetected
Soluble manganese	mg/L	5	Undetected	Undetected
Chromium	mg/L	1	Undetected	Undetected
Coliform count	units/mL	1,500	Undetected	Undetected
Nitrogen	mg/L	16 (12)	9.6	9.2
Nickel	mg/L	1	Undetected	Undetected
Phosphorus	mg/L	1 (0.5)	Undetected	Undetected
Boron	mg/L	10	0	0
Fluorine	mg/L	7.5	0	0

Environmental Data For Each Production Base

JATCO MEXICO S.A. DE C.V.



Air pollution

NO_x: Nitrogen oxide

Equipment	Item	Unit	Regulatory limit (including exceptions)	Measured values	
				Maximum	Average
Metal-heating furnace	Dust and soot	g/Nm ³	1,022.5	5.6	4.0
	NO _x	ppm	—	—	—
Aluminum-melting furnace	Dust and soot	g/Nm ³	—	—	—
	NO _x	ppm	375.0	260.0	177.0
Metal-heating furnace	Dust and soot	g/Nm ³	1,113.8	1.6	1.5
	NO _x	ppm	—	—	—

Water quality

Item	Unit	Regulatory limit (including exceptions)	Measured values	
			Maximum	Average
Hydrogen ion concentration (pH)	—	5 - 10	7.6	7.4
Biochemical oxygen demand (BOD)	mg/L	150	80.2	61.7
Chemical oxygen demand (COD)	mg/L	320	310.9	174.0
Suspended solids (SS)	mg/L	150	63.5	39.2
n-hexane extracts (mineral oils)	mg/L	15	10.1	8.3
Phenols	mg/L	NA	—	—
Copper	mg/L	4	0.2	0.1
Zinc	mg/L	10	0.2	0.2

JATCO (Guangzhou) Automatic Transmission Ltd.



Air pollution

TSP: Total suspended particulates

Equipment	Item	Unit	Regulatory limit (including exceptions)	Measured values	
				Maximum	Average
Heat treatment line	TSP	mg/m ³	120	27.5	17.3
	Nonmethane hydrocarbons	mg/m ³	120	79.3	14.6
Machining line	TSP	mg/m ³	120	1.6	1.4
	Nonmethane hydrocarbons	mg/m ³	—	—	—

Water quality

Item	Unit	Regulatory limit (including exceptions)	Measured values	
			Maximum	Average
Hydrogen ion concentration (pH)	—	6.0 - 9.0	7.8	7.5
Biochemical oxygen demand (BOD)	mg/L	300	32	24
Chemical oxygen demand (COD)	mg/L	500	116	87.0
Suspended solids (SS)	mg/L	400	146	110
n-hexane extracts (mineral oils)	mg/L	20	0.43	0.23

JATCO (Thailand) Co., Ltd.



Air pollution

TSP: Total suspended particulates

Equipment	Item	Unit	Regulatory limit (including exceptions)	Measured values	
				Maximum	Average
Vacuum carburizing furnace VF No. 1	TSP	mg/m ³	400	26.48	12.00
Vacuum carburizing furnace VF No. 2	TSP	mg/m ³	400	26.4	3.40

Water quality

Item	Unit	Regulatory limit (including exceptions)	Measured values	
			Maximum	Average
Hydrogen ion concentration (pH)	—	5.5 - 9.0	8.37	7.6
Biochemical oxygen demand (BOD)	mg/L	500	90	39.43
Chemical oxygen demand (COD)	mg/L	750	181	93.8
Suspended solids (SS)	mg/L	200	65	27
n-hexane extracts (mineral oils)	mg/L	10	5.7	2.99

Air pollution

TSP: Total suspended particulates

Equipment	Item	Unit	Regulatory limit (including exceptions)	Measured values	
				Maximum	Average
Heat treatment line	TSP	mg/m ³	120	2.5	1.9
	Nonmethane hydrocarbons	mg/m ³	50	76.5	35.5
Machining line	TSP	mg/m ³	120	18.2	7.6
	Nonmethane hydrocarbons	mg/m ³	—	—	—

Water quality

Item	Unit	Regulatory limit (including exceptions)	Measured values	
			Maximum	Average
Hydrogen ion concentration (pH)	—	6.0 - 9.0	7.7	7.4
Biochemical oxygen demand (BOD)	mg/L	300	—	—
Chemical oxygen demand (COD)	mg/L	500	347.6	281.0
Suspended solids (SS)	mg/L	400	110	47
n-hexane extracts (mineral oils)	mg/L	100	44.9	11.9

JATCO (Suzhou) Automatic Transmission Ltd.



Jatco